



Air Conditioning & Heating

PRODUCT SPECIFICATIONS



13 SEER / 11.3 EER 7.7 HSPF

SINGLE-PHASE & THREE-PHASE

COOLING CAPACITY: 35,000 — 59,500 BTU/H

HEATING CAPACITY: 35,000 — 58,500 BTU/H



CPH COMMERCIAL 3- TO 5-TON SELF-CONTAINED PACKAGED HEAT PUMP

The new Goodman® CPH 13 SEER Commercial Packaged Heat Pump feature the environmentally friendly refrigerant R-410A, which is chlorine-free to help prevent damage to the ozone layer. Other features include a high-efficiency scroll compressor and a high-capacity, steel-cased filter dryer. These units are housed in a heavy-gauge, galvanized-steel cabinet with UV-resistant power-paint finish.

Standard Features

- Environmentally friendly R-410A refrigerant
- High-efficiency scroll compressor
- Copper tube / aluminum fin coils
- Contactor with lugs
- High-capacity, steel-cased filter dryer
- Single-point entry
- 24-volt terminal strip
- Convertible
- Easy to service
- Built-in filter rack with standard 2" filters
- Bottom utility entry
- ARI Certified; ETL Listed

Cabinet Features

- Heavy-gauge, galvanized-steel cabinet with UV-resistant powder-paint finish
- Full Perimeter Rail
- Curb Fit

Contents

Nomenclature.....	2
Product Specifications.....	3
Airflow Data	6
Expanded Heating Data	11
Heat Kit Electrical Data	12
Expanded Cooling Data.....	15
Dimensions.....	21
Wiring Diagrams	26
Accessories	36



NOMENCLATURE

	C	P	H	060	070	1	D	X	X	X	
	1	2	3	4,5,6	7,8,9	10	11	12	13	14	
Brand	C Commercial										Factory-Installed Options (Coming Soon)
Configuration	P Packaged Multi-Position										Special Features X No Features
Application	C Cooling G Gas Heat H Heat Pump										Special Treatment X No Treatment/ Standard Aluminized Heat Exchanger (AH)
Nominal Gross Cooling Capacity	036 3 Tons 048 4 Tons 060 5 Tons 072 6 Tons 090 7½ Tons 102 8½ Tons	120 10 Tons 150 12½ tons 180 15 Tons 240 20 Tons 300 25 Tons									Economizer Options (Factory Installed) X No Economizer
Heating Capacity											Supply Fan/Drive Type/Motor B Belt Drive D Direct Drive H High-Static Belt Drive
CPG	070 70,000 BTU/h 105 105,000 BTU/h 140 140,000 BTU/h 210 210,000 BTU/h 350 350,000 BTU/h 400 400,000 BTU/h	CPC/CPH XXX No Heat 010 10 kW Electric Heater 015 15 kW Electric Heater 020 20 kW Electric Heater 025 25 kW Electric Heater									Voltage 1 208v 1 Phase 2 220/240V 1 Phase 3 208v 3 Phase 4 460v 3 Phase 5 380/415v 3 Phase 50 Hz 7 575v 3 Phase

PRODUCT SPECIFICATIONS — 3 TONS

	CPH036 ***1D***	CPH036 ***3D***	CPH036 ***3B***	CPH036 ***4B***	CPH036 ***7B***
Cooling Capacity					
Total BTU/h	35,000	35,000	35,000	35,000	35,000
Sensible BTU/h	25,900	25,900	25,900	25,900	25,900
SEER / EER	13 / 11.3	13 / 11.3	13 / 11.3	13 / 11.3	13 / 11.3
IPLV	12.30	12.30	12.30	12.30	12.30
Decibels	76.7	76.7	76.7	76.7	76.7
ARI Reference #s	3012031	3009015	3009015	3009016	3009017
Heating Capacity					
BTU/h - COP (47° F)	35,000 - 3.4	35,000 - 3.4	35,000 - 3.4	35,000 - 3.4	35,000 - 3.4
BTU/h - COP (17° F)	20,800 / 2.3	20,800 / 2.3	20,800 / 2.3	20,800 / 2.3	20,800 / 2.3
HSPF	7.7	7.7	7.7	7.7	7.7
Evaporator Motor / Coil					
Motor Type	Direct Drive	Direct Drive	Belt Drive	Belt Drive	Belt Drive
# of Wheels (D x W)	1 (10" x 9")	1 (10" x 9")	1 (11" x 10")	1 (11" x 10")	1 (11" x 10")
Indoor Nominal CFM	12,00	12,00	12,00	12,00	12,00
Motor Speed Tap (Cooling)	Low Speed	Low Speed	---	---	---
Indoor Motor FLA (Cooling)	2.50	2.50	3.8	1.9	2.3
Horsepower - RPM	1/3 - 890	1/3 - 890	1.0 - 1725	1.0 - 1725	1.5 - 1725
Piston Size (Cooling)	0.068	0.068	0.068	0.068	0.068
Expansion Device	Orifice	Orifice	Orifice	Orifice	Orifice
Filter Size	(4) 14"x20"x2"	(4) 14"x20"x2"	(4) 14"x20"x2"	(4) 14"x20"x2"	(4) 14"x20"x2"
Drain Size (NPT)	3/4"	3/4"	3/4"	3/4"	3/4"
R-410A Refrigerant Charge Cir #1(oz.)	105.0	105.0	105.0	105.0	105.0
Evaporator Coil Face Area (ft ²)	5.4	5.4	5.4	5.4	5.4
Rows Deep/ Fins per Inch	3 / 16	3 / 16	3 / 16	3 / 16	3 / 16
Belt Drive Evap Fan Data					
# of Wheels (D x W)	1 (10" x 9")	1 (10" x 9")	1 (11" x 10")	1 (11" x 10")	1 (11" x 10")
Motor Sheave	---	---	1VL40 X 5/8	1VL40 X 5/8	1VL40 X 5/8
Blower Sheave	---	---	AK69 X 1	AK69 X 1	AK69 X 1
Belt	---	---	AX41	AX41	AX41
Condenser Fan / Coil					
Quantity of condenser Fan Motors	1	1	1	1	1
Horsepower - RPM	1/4 / 1,090	1/4 / 1,090	1/4 / 1,090	1/4 - 890	1/4 - 1,075
Fan Diameter/ # Fan Blades	22 / 4	22 / 4	22 / 4	22 / 4	22 / 4
Outdoor Nominal CFM	3,800	3,800	3,800	3,800	3,800
Face Area (ft ²)	18	18	18	18	18
Rows Deep/ Fins per Inch	1 / 22	1 / 22	1 / 22	1 / 22	1 / 22
Piston Size (Heating)	0.055	0.055	0.055	0.055	0.055
Electrical Data					
Voltage/Phase/ Frequency	208-230/1/60	208-230/3/60	208-230/3/60	460/3/60	575/3/60
Quantity of Compressors	1	1	1	1	1
Compressor RLA / LRA	16.7 / 79.0	10.5 / 73.0	10.5 / 73.0	5.8 / 38.0	3.8 / 36.5
Indoor Blower HP / FLA	1/3 / 2.5	1/3 / 2.5	1.0 / 3.8	1.0 / 1.9	1.5 / 2.3
Outdoor Fan HP / FLA	1/4 / 1.4	1/4 / 1.4	1/4 / 1.4	1/4 / 0.8	1/4 / 0.6
Total Unit Amps	20.57	14.35	15.65	8.47	6.68
Min. Circuit Ampacity ¹	25	17	18	10	8
Max. Overcurrent Protection (amps) ²	40	25	25	15	10
Entrance Power Supply	Locating Dimple	Locating Dimple	Locating Dimple	Locating Dimple	Locating Dimple
Entrance Control Voltage	Locating Dimple	Locating Dimple	Locating Dimple	Locating Dimple	Locating Dimple
Operating Weight (lbs)	570	570	570	570	570
Ship Weight (lbs)	590	590	590	590	590

¹ Wire size should be determined in accordance with National Electrical Codes. Extensive wire runs will require larger wire sizes.

² May use fuses or HACR-type circuit breakers of the same size as noted.

Note: Always check the S&R plate for electrical data on the unit being installed.

PRODUCT SPECIFICATIONS — 4 TONS

	CPH048 ***1D***	CPH048 ***3D***	CPH048 ***3B***	CPH048 ***4B***	CPH048 ***7B***
Cooling Capacity					
Total BTU/h	46,000	46,000	46,000	46,000	46,000
Sensible BTU/h	34,500	34,500	34,500	34,500	34,500
SEER / EER	13 / 11.3	13 / 11.3	13 / 11.3	13 / 11.3	13 / 11.3
Decibels	77.7	77.7	77.7	77.7	77.7
ARI Reference #s	3012030	3009018	3009018	3009019	3009020
Heating Capacity					
BTU/h (47° F)	46,000	46,000	46,000	46,000	46,000
COP (47°F)	3.4	3.4	3.4	3.4	3.4
BTU/h (17° F)	26,500	26,500	26,500	26,500	26,500
COP (17°F)	2.3	2.3	2.3	2.3	2.3
HSPF	7.7	7.7	7.7	7.7	7.7
Evaporator Motor / Coil					
Motor Type	Direct Drive	Direct Drive	Belt Drive	Belt Drive	Belt Drive
Indoor Nominal CFM	1,600	1,600	1,600	1,600	1,600
Motor Speed Tap (Cooling)	Medium	Medium	---	---	---
Indoor motor FLA (Cooling)	2.87	2.87	3.8	1.9	2.3
Horsepower - RPM	½ - 1,000	½ - 1,000	1.0 - 1,725	1.0 - 1,725	1.5 - 1,725
Piston Size (Cooling)	0.076	0.076	0.076	0.076	0.076
Filter Size	(4) 14"x20"x2"	(4) 14"x20"x2"	(4) 14"x20"x2"	(4) 14"x20"x2"	(4) 14"x20"x2"
Drain Size (NPT)	¾"	¾"	¾"	¾"	¾"
R-410A Refrigerant Charge (oz.)	185.0	185.0	185.0	185.0	185.0
Evaporator Coil Face Area (ft²)	7.8	7.8	7.8	7.8	7.8
Rows Deep / Fins per Inch	4 / 16	4 / 16	4 / 16	4 / 16	4 / 16
Belt Drive Evap Fan Data					
# of Wheels (D x W)	1 (10" x 9")	1 (10" x 9")	1 (11" x 10")	1 (11" x 10")	1 (11" x 10")
Motor Sheave	---	---	VL44 X 5/8	VL44 X 5/8	VL44 X 5/8
Blower Sheave	---	---	AK66 X 1	AK66 X 1	AK66 X 1
Belt	---	---	AX41	AX41	AX41
Condenser Fan / Coil					
Quantity of condenser Fan Motors	1	1	1	1	1
Horsepower - RPM	¼ / 1,090	¼ / 1,090	¼ / 1,090	¼ - 890	¼ - 1,075
Fan Diameter / # Fan Blades	22 / 4	22 / 4	22 / 4	22 / 4	22 / 4
Outdoor Nominal CFM	3,800	3,800	3,800	3,800	3,800
Face Area (ft²)	18.0	18.0	18.0	18.0	18.0
Rows Deep / Fins per Inch	2 / 18	2 / 18	2 / 18	2 / 18	2 / 18
Piston Size (Heating)	0.057	0.057	0.057	0.057	0.057
Electrical Data					
Voltage/Phase/ Frequency	208-230/1/60	208-230/3/60	208-230/3/60	460/3/60	575/3/60
Quantity of Compressors	1	1	1	1	1
Compressor RLA / LRA	20 / 109	13.1 / 83.1	13.1 / 83.1	6.1 / 41	4.4 / 33
Max External Static	0.6"	0.6"	0.8"	0.8"	0.8"
Outdoor Fan RLA	1.40	1.40	1.40	0.80	0.60
Total Unit Amps	24.1	17.4	18.3	8.8	7.3
Min. Circuit Ampacity ¹	29	21	22	10	8
Max. Overcurrent Protection (amps) ²	45	30	30	15	10
Entrance Power Supply	Locating	Locating	Locating	Locating	Locating
Entrance Control Voltage	Dimple	Dimple	Dimple	Dimple	Dimple
Operating Weight (lbs)	585	585	585	585	585
Ship Weight (lbs)	605	605	605	605	605

¹ Wire size should be determined in accordance with National Electrical Codes. Extensive wire runs will require larger wire sizes.

² May use fuses or HACR-type circuit breakers of the same size as noted.

Note: Always check the S&R plate for electrical data on the unit being installed.

PRODUCT SPECIFICATIONS — 5 TONS

	CPH060 ***1D***	CPH060 ***3D***	CPH060 ***3B***	CPH060 ***4B***	CPH060 ***7B***
Cooling Capacity					
Total BTU/h	59,500	59,500	59,500	59,500	59,500
Sensible BTU/h	42,500	42,500	42,500	42,500	42,500
SEER / EER	13 / 11.3	13 / 11.3	13 / 11.3	13 / 11.3	13 / 11.3
Decibels	77.2	77.2	77.2	77.2	77.2
ARI Reference No.	1487345	1487471	1487471	1487469	1487470
Heating Capacity					
BTU/h / COP (47° F)	58,500 / 3.65	58,500 / 3.65	58,500 / 3.65	58,500 / 3.65	58,500 / 3.65
BTU/h / COP (17° F)	33,000 / 2.50	33,000	33,000	33,000	33,000 / 2.50
HSPF	7.7	7.7	7.7	7.7	7.7
Evaporator Motor					
Motor Type	Direct	Direct	Belt	Belt	Belt
Indoor Nominal CFM	2,000	2,000	2,000	2,000	2,000
Expansion Device	Piston	Piston	Piston	Piston	Piston
Piston Size (Cooling)	0.082	0.082	0.082	0.082	0.082
Filter Size	14" x 20" x 2"	14" x 20" x 2"	14" x 20" x 2"	14" x 20" x 2"	14" x 20" x 2"
Drain Size (NPT)	¾"	¾"	¾"	¾"	¾"
R-410A Refrigerant Charge (oz.)	185	185	185	185	185
Evaporator Coil					
Face Area (ft²)	7.8	7.8	7.8	7.8	7.8
Rows Deep/ Fins per Inch	4 / 16	4 / 16	4 / 16	4 / 16	4 / 16
Tube Diameter/ Material	5/16"/ Copper	5/16"/ Copper	5/16"/ Copper	5/16"/ Copper	5/16"/ Copper
Evaporator Fan					
Standard Direct Drive (D x W) HP	(11" X 10") 1	(11" X 10") 1	----	----	----
Standard Belt Drive (D x W) HP	----	----	(11" X 10") 1	(11" X 10") 1	(11" X 10") 1½
High-Static Belt Drive (D x W) HP	----	----	(11" X 10") 1½	(11" X 10") 1½	----
Condenser Fan / Coil					
Horsepower / RPM	¼ / 1,090	¼ / 1,090	¼ / 1,090	¼ / 1,090	¼ / 1,075
Fan Diameter/ # Fan Blades	22 / 4	22 / 4	22 / 4	22 / 4	22 / 4
Outdoor Nominal CFM	3,800	3,800	3,800	3,800	3,800
Face Area (ft²)	17½	17½	17½	17½	17½
Rows Deep/ Fins per Inch	2 / 18	2 / 18	2 / 18	2 / 18	2 / 18
Tube Diameter/ Material	5/16"/ Copper	5/16"/ Copper	5/16"/ Copper	5/16"/ Copper	5/16"/ Copper
Piston Size (Heating)	0.064	0.064	0.064	0.064	0.064
Electrical Data					
Voltage/ Frequency/ Phase	208-230 / 60 / 3	208-230 / 60 / 3	208-230 / 60 / 3	460 / 60 / 3	575-3-60
Compressor RLA / LRA	26.4 / 134	15.96 / 110	15.96 / 110	7.76 / 52	5.7 / 38.9
Indoor Blower HP / FLA	1.0 / 7.6	1.0 / 7.6	1.0 / 3.8	1.0 / 1.9	1.5 / 2.3
Indoor Blower LRA	----	----	24	12	12
Max External Static	0.9	0.9	1.0	1.0	1.0
Outdoor Fan HP / RLA	¼ / 1.40	¼ / 1.40	¼ / 1.40	¼ / 0.80	¼ / 0.60
Min. Circuit Ampacity ¹	42	29	25	12	10
Max. Overcurrent Protection (amps) ²	60	45	40	20	15
Entrance Power Supply	Locating Dimple		Locating Dimple		
Entrance Control Voltage	Locating Dimple		Locating Dimple		
Operating Weight (lbs)	590	590	590	590	590
Ship Weight (lbs)	610	610	610	610	610

¹ Wire size should be determined in accordance with National Electrical Codes. Extensive wire runs will require larger wire sizes.

² May use fuses or HACR-type circuit breakers of the same size as noted.

Note: Always check the S&R plate for electrical data on the unit being installed.

AIRFLOW DATA — DIRECT DRIVE — 3 TONS

Standard Direct Drive Motor — Down Shot

CFM	Static	Amps	Watts	RPM	Speed Tap
878	0.6	1.35	300	892	Low
979	0.5	1.44	320	839	
1023	0.4	1.51	330	792	
1088	0.3	1.56	340	745	
1144	0.2	1.61	350	692	
1207	0.1	1.62	353	639	
925	0.8	1.61	362	1011	Med
1057	0.7	1.74	391	975	
1164	0.6	1.85	416	943	
1251	0.5	1.93	434	914	
1324	0.4	2.02	450	881	
1402	0.3	2.12	471	851	
815	0.9	1.89	403	1070	High
1072	0.8	2.09	453	1040	
1225	0.7	2.22	486	1011	
1330	0.6	2.31	509	987	
1429	0.5	2.40	533	966	

Standard Direct Drive Motor — Horizontal

CFM	Static	Amps	Watts	RPM	Speed Tap
873	0.6	1.34	299	899	Low
960	0.5	1.42	312	857	
1017	0.4	1.49	325	810	
1071	0.3	1.53	335	775	
1120	0.2	1.59	346	720	
1164	0.1	1.63	354	663	
852	0.8	1.54	344	1032	Med
1037	0.7	1.70	379	987	
1135	0.6	1.81	405	963	
1237	0.5	1.90	424	934	
1307	0.4	2.00	443	904	
1365	0.3	2.07	461	869	
1422	0.2	2.16	477	834	High
1469	0.1	2.24	494	792	
855	0.9	1.91	406	1081	
1096	0.8	2.09	452	1045	
1219	0.7	2.19	478	1022	
1299	0.6	2.27	499	999	
1396	0.5	2.37	526	981	
1487	0.4	2.47	547	957	
1552	0.3	2.55	566	934	

Notes

Assumes dry coil with filter in place; SCFM correction for wet coil = 4%

Standard Belt Drive Down-Shot

ESP, In H ₂ O	Turns Open																	
	0			1			2			3			4			5		
	CFM	RPM	BHP	CFM	RPM	BHP	CFM	RPM	BHP	CFM	RPM	BHP	CFM	RPM	BHP	CFM	RPM	BHP
0.2																1521	717	0.27
0.3													1515	764	0.3	1356	717	0.23
0.4										1553	816	0.34	1314	764	0.24	1114	723	0.18
0.5										1366	816	0.29	1098	768	0.2			
0.6							1384	870	0.33	1094	823	0.23						
0.7				1427	923	0.38	1138	876	0.27									
0.8	1515	976	0.46	1201	923	0.32												
0.9	1272	982	0.38															
1																		

Standard Belt Drive Horizontal

ESP, In H ₂ O	Turns Open																	
	0			1			2			3			4			5		
	CFM	RPM	BHP	CFM	RPM	BHP	CFM	RPM	BHP	CFM	RPM	BHP	CFM	RPM	BHP	CFM	RPM	BHP
0.2																1393	713	0.24
0.3													1406	766	0.27	1244	713	0.21
0.4										1431	820	0.31	1238	769	0.23	1045	717	0.17
0.5							1472	872	0.35	1268	822	0.27	1039	769	0.19			
0.6				1506	924	0.41	1290	874	0.31	1073	822	0.22						
0.7				1328	929	0.35	1070	875	0.25									
0.8	1386	976	0.42	1131	929	0.31												
0.9	1169	975	0.35															
1	859	981	0.27															

AIRFLOW DATA — DIRECT DRIVE — 4 TONS

Standard Direct Drive Motor — Down Shot

CFM	Static	Watts	RPM	Speed
1165	0.8	476	1014	Med
1307	0.7	508	980	
1404	0.6	526	954	
1495	0.5	550	925	
1577	0.4	578	898	
1659	0.3	596	865	
1711	0.2	541	832	
1201	0.9	560	1045	High
1358	0.8	594	1021	
1487	0.7	620	997	
1589	0.6	642	979	
1716	0.5	668	956	
1820	0.4	692	932	

Standard Direct Drive Motor — Horizontal

CFM	Static	Watts	RPM	Speed
1307	0.7	508	980	Med
1404	0.6	526	954	
1495	0.5	550	925	
1577	0.4	578	898	
1659	0.3	596	865	
1711	0.2	541	832	
1771	0.1	558	804	
1285	0.8	586	1035	High
1448	0.7	620	1008	
1551	0.6	648	992	
1662	0.5	672	970	
1705	0.4	688	947	
1818	0.3	724	926	
1867	0.2	734	903	

Notes

Table represents dry coil without filter. To account for filter 0.08" should be added to measured ESP.

SCFM correction for wet coil = 4%.

Four-ton models are shipped from the factory with speed tap set on medium speed.

Standard Belt Drive Down-Shot

ESP, In H ₂ O	Turns Open																		
	0			1			2			3			4			5			
	CFM	RPM	BHP	CFM	RPM	BHP	CFM	RPM	BHP	CFM	RPM	BHP	CFM	RPM	BHP	CFM	RPM	BHP	
0.2																			
0.3																	1851	826	0.44
0.4													1872	887	0.5	1665	831	0.39	
0.5													1720	887	0.45	1503	831	0.34	
0.6										1767	942	0.52	1576	892	0.41				
0.7							1818	992	0.59	1564	942	0.44	1334	892	0.33				
0.8							1624	997	0.51	1340	947	0.37							
0.9				1739	1052	0.62	1423	1000	0.45										
1	1842	1101	0.72	1551	1052	0.54													
1.1	1653	1107	0.63	1316	1057	0.45													

Standard Belt Drive Horizontal

ESP, In H ₂ O	Turns Open																	
	0			1			2			3			4			5		
	CFM	RPM	BHP	CFM	RPM	BHP	CFM	RPM	BHP	CFM	RPM	BHP	CFM	RPM	BHP	CFM	RPM	BHP
0.2													1839	887	0.5	1706	832	0.4
0.3													1851	942	0.54	1716	887	0.45
0.4													1730	942	0.5	1617	887	0.41
0.5							1742	997	0.56	1631	942	0.47	1478	888	0.37			
0.6							1662	997	0.53	1477	947	0.41						
0.7				1777	1052	0.64	1519	1001	0.48									
0.8	1862	1101	0.73	1646	1052	0.58	1369	1002	0.42									
0.9	1687	1107	0.65	1491	1052	0.52												
1	1548	1107	0.59															
1.1	1397	1112	0.54															

AIRFLOW DATA — DIRECT DRIVE — 5 TONS

STANDARD DIRECT DRIVE MOTOR, DOWN SHOT

Standard Cfm	Static	Amps	Watts	Rpm	Speed Tap
765	0.9	2.15	245	910	T1
820	0.8	2.05	230	870	
905	0.7	2.00	225	830	
965	0.6	1.90	215	790	
1040	0.5	1.80	200	730	
1120	0.4	1.70	180	690	
1180	0.3	1.60	175	645	
1255	0.2	1.50	160	595	
1440	0.1	1.70	180	580	
995	0.9	2.60	310	935	
1060	0.8	2.60	300	905	
1130	0.7	2.45	290	855	
1190	0.6	2.40	270	810	
1260	0.5	2.30	260	765	
1315	0.4	2.20	240	730	
1375	0.3	2.05	220	680	
1445	0.2	2.00	220	645	
1520	0.1	1.90	205	595	
1675	0.9	4.90	615	1020	T3
1715	0.8	4.70	590	980	
1785	0.7	4.60	580	955	
1835	0.6	4.50	560	930	
1895	0.5	4.40	540	890	
1950	0.4	4.20	530	855	
2005	0.3	4.05	510	820	
2045	0.2	3.95	490	790	
2030	0.1	3.80	470	750	
1685	0.9	5.40	690	1030	
1725	0.8	5.30	665	1005	
1795	0.7	5.15	665	965	
1835	0.6	5.05	640	940	
1905	0.5	4.95	635	915	
1990	0.4	4.80	600	875	
2080	0.3	4.70	590	850	
2150	0.2	4.50	565	810	
2200	0.1	4.40	545	780	
1910	0.9	6.10	810	1065	T5
1945	0.8	5.95	790	1035	
1985	0.7	5.90	775	1005	
2045	0.6	5.75	750	975	
2090	0.5	5.57	730	940	
2140	0.4	5.50	705	915	
2190	0.3	5.30	685	880	
2225	0.2	5.20	665	850	
2275	0.1	5.10	640	820	

STANDARD DIRECT DRIVE MOTOR, HORIZONTAL

Standard Cfm	Static	Amps	Watts	Rpm	Speed Tap
730	0.9	2.20	260	920	T1
785	0.8	2.00	235	890	
850	0.7	2.00	230	850	
915	0.6	1.95	210	815	
980	0.5	1.90	205	780	
1055	0.4	1.75	200	730	
1120	0.3	1.70	185	680	
1190	0.2	1.60	175	635	
1250	0.1	1.50	150	595	
955	0.9	2.70	325	960	
1000	0.8	2.60	305	925	
1070	0.7	2.55	295	895	
1120	0.6	2.45	285	855	
1185	0.5	2.40	270	805	
1255	0.4	2.30	260	770	
1305	0.3	2.15	245	725	
1360	0.2	2.00	230	685	
1415	0.1	2.00	220	655	
1575	0.9	4.85	630	1065	T3
1620	0.8	4.75	620	1035	
1670	0.7	4.70	600	1010	
1750	0.6	4.60	600	975	
1780	0.5	4.50	570	940	
1835	0.4	4.40	555	920	
1870	0.3	4.30	545	890	
1900	0.2	4.20	525	865	
1950	0.1	4.05	500	830	
1605	0.9	5.75	735	1090	
1660	0.8	5.65	705	1055	
1690	0.7	5.51	690	1030	
1735	0.6	5.36	680	1000	
1786	0.5	5.24	665	975	
1855	0.4	5.15	650	950	
1905	0.3	5.10	640	925	
1925	0.2	4.95	635	900	
2015	0.1	4.85	600	875	
1805	0.9	6.00	800	1115	T5
1890	0.8	6.10	810	1090	
1935	0.7	6.05	800	1065	
1990	0.6	5.95	785	1040	
2020	0.5	5.85	765	1020	
2070	0.4	5.70	755	985	
2100	0.3	5.65	740	965	
2140	0.2	5.55	720	940	
2170	0.1	5.40	710	915	

Notes

Assumes dry coil with filter in place; SCFM correction for wet coil = 4%
 Five-ton models are shipped from the factory with speed tap set on T4.

AIRFLOW DATA — BELT DRIVE — 5 TONS (CONT.)

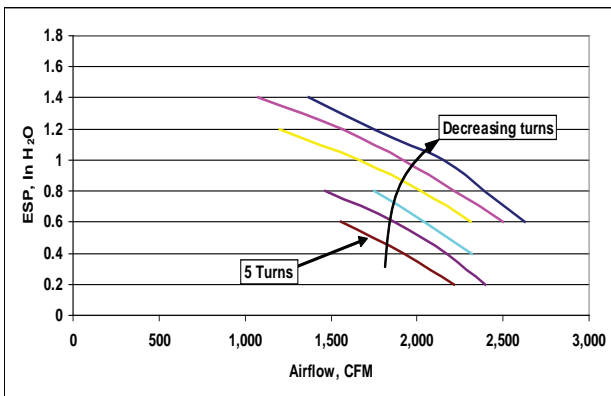
Standard Belt Drive — Down Shot

ESP, In H ₂ O	Turns Open																	
	0			1			2			3			4			5		
	CFM	RPM	BHP	CFM	RPM	BHP	CFM	RPM	BHP	CFM	RPM	BHP	CFM	RPM	BHP	CFM	RPM	BHP
0.2													2,399	951	0.69	2,213	895	0.6
0.4										2,317	1,008	0.75	2,172	956	0.65	1,924	899	0.55
0.6	2,627	1,157	1.06	2,498	1,115	0.94	2,310	1,066	0.79	2,040	1,014	0.69	1,868	961	0.59	1,557	902	0.49
0.8	2,392	1,162	1.02	2,215	1,121	0.87	2,025	1,071	0.73	1,752	1,019	0.63	1,465	965	0.52			
1	2,154	1,173	0.93	1,920	1,126	0.78	1,665	1,077	0.65									
1.2	1,748	1,184	0.83	1,569	1,135	0.7	1,199	1,084	0.56									
1.4	1,371	1,190	0.74	1,077	1,143	0.62												
1.6																		

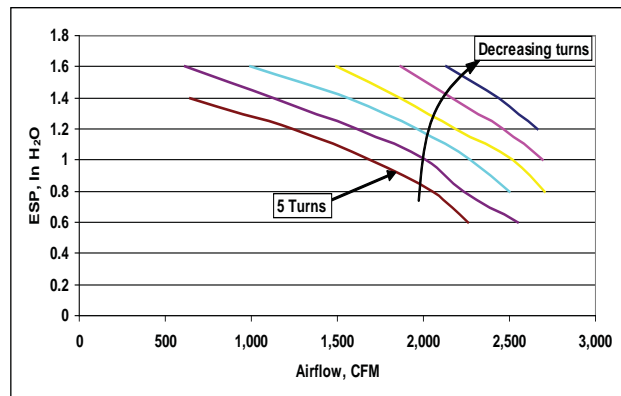
High-Static, Belt Drive — Down Shot

ESP, In H ₂ O	Turns Open																	
	0			1			2			3			4			5		
	CFM	RPM	BHP	CFM	RPM	BHP	CFM	RPM	BHP	CFM	RPM	BHP	CFM	RPM	BHP	CFM	RPM	BHP
0.2																		
0.4																		
0.6													2,551	1,134	1.01	2,259	1,079	0.91
0.8							2,705	1,241	1.21	2,498	1,189	1.09	2,235	1,134	0.96	2,052	1,079	0.85
1				2,690	1,299	1.28	2,521	1,245	1.14	2,269	1,195	1.02	2,015	1,140	0.9	1,687	1,085	0.79
1.2	2,661	1,355	1.34	2,466	1,302	1.22	2,188	1,250	1.06	1,966	1,196	0.95	1,613	1,145	0.83	1,243	1,090	0.71
1.4	2,437	1,360	1.27	2,167	1,311	1.13	1,870	1,256	0.98	1,566	1,200	0.86	1,130	1,147	0.75	647	1,090	0.64
1.6	2,132	1,371	1.18	1,865	1,316	1.05	1,496	1,261	0.9	991	1,206	0.76	615	1,151	0.68			

Standard Belt Drive — Down Shot



CPG060 High-Static, Belt Drive — Down Shot



AIRFLOW DATA — BELT DRIVE — 5 TONS (CONT.)

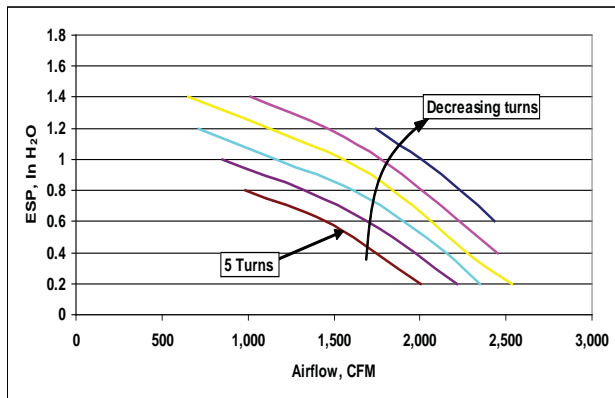
Standard Belt Drive — Horizontal

ESP, In H ₂ O	Turns Open																				
	0			1			2			3			4			5					
	CFM	RPM	BHP	CFM	RPM	BHP	CFM	RPM	BHP	CFM	RPM	BHP	CFM	RPM	BHP	CFM	RPM	BHP			
0.2							2,533	1,058	0.84	2,346	1,000	0.73	2,213	950	0.64	2,004	898	0.57			
0.4				2,451	1,120	0.89	2,278	1,063	0.79	2,154	1,007	0.68	1,976	956	0.6	1,742	903	0.52			
0.6	2,436	1,175	0.95	2,227	1,122	0.84	2,065	1,069	0.73	1,899	1,014	0.64	1,691	961	0.55	1,450	903	0.47			
0.8	2,236	1,181	0.89	2,011	1,129	0.78	1,839	1,074	0.68	1,615	1,021	0.58	1,331	967	0.49	986	909	0.42			
1	2,008	1,187	0.82	1,777	1,137	0.71	1,555	1,079	0.61	1,165	1,027	0.51	852	972	0.43						
1.2	1,746	1,193	0.75	1,467	1,143	0.64	1,128	1,090	0.54	710	1,033	0.45									
1.4				1,012	1,148	0.56	653	1,096	0.46												
1.6																					

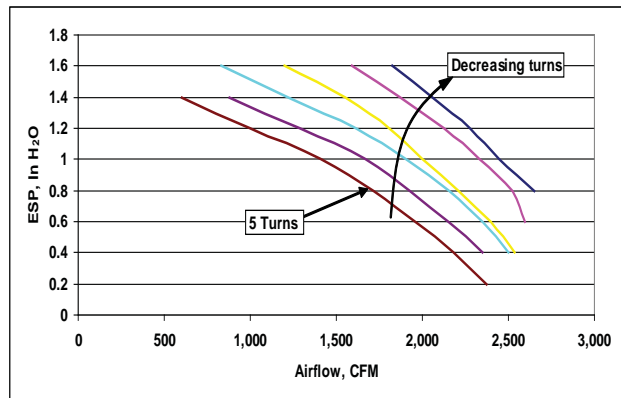
High-Static Belt Drive — Horizontal

ESP, In H ₂ O	Turns Open																				
	0			1			2			3			4			5					
	CFM	RPM	BHP	CFM	RPM	BHP	CFM	RPM	BHP	CFM	RPM	BHP	CFM	RPM	BHP	CFM	RPM	BHP			
0.2																2,376	1,074	0.91			
0.4							2,537	1,225	1.14	2,498	1,190	1.05	2,347	1,135	0.97	2,179	1,077	0.87			
0.6				2,595	1,300	1.22	2,399	1,234	1.11	2,350	1,193	1.00	2,154	1,138	0.92	1,955	1,081	0.84			
0.8	2,648	1,355	1.29	2,527	1,306	1.18	2,210	1,242	1.06	2,157	1,195	0.95	1,928	1,141	0.87	1,714	1,084	0.79			
1	2,444	1,361	1.23	2,329	1,305	1.12	2,001	1,246	1.00	1,902	1,198	0.91	1,668	1,144	0.82	1,411	1,088	0.74			
1.2	2,280	1,365	1.16	2,127	1,311	1.06	1,806	1,249	0.94	1,613	1,203	0.85	1,291	1,149	0.76	997	1,090	0.67			
1.4	2,061	1,367	1.11	1,872	1,316	0.99	1,557	1,256	0.89	1,226	1,206	0.77	881	1,151	0.7	605	1,095	0.63			
1.6	1,826	1,372	1.05	1,590	1,319	0.93	1,197	1,264	0.81	831	1,209	0.71									

Standard Belt Drive — Horizontal



High-Static, Belt Drive — Horizontal



EXPANDED HEATING DATA

3 Tons

	Outdoor Ambient Temperature																	
	65	60	55	50	47	45	40	35	30	25	20	17	15	10	5	0	-5	-10
MBh	44.0	41.7	39.2	36.6	35.0	33.9	31.5	29.1	25.9	23.9	22.0	20.8	20.0	18.0	15.9	13.9	11.9	9.7
T/R	33.9	32.1	30.2	28.3	27.0	26.2	24.3	22.4	20.0	18.5	17.0	16.1	15.5	13.9	12.3	10.7	9.2	7.5
kW	3.20	3.14	3.08	3.02	2.98	2.96	2.90	2.84	2.81	2.75	2.69	2.66	2.63	2.57	2.51	2.45	2.39	2.33
Amps	10.9	10.2	9.6	9.2	8.9	8.8	8.4	8.0	7.7	7.5	7.2	7.1	7.0	6.7	6.4	6.1	5.8	5.4
COP	4.03	3.89	3.73	3.56	3.44	3.36	3.18	3.00	2.70	2.55	2.40	2.29	2.23	2.05	1.86	1.66	1.45	1.22
Hi Pr	404	388	373	356	348	341	328	315	302	288	277	270	265	255	245	235	227	219
Lo Pr	183	170	159	146	138	133	122	109	98	88	77	72	69	58	50	43	37	29

Above information is for nominal CFM and 70 degree indoor dry bulb. Instantaneous capacity listed.
 High pressure is measured at the liquid line gauge port connection Amps = unit amps (comp.+fans)
 Low pressure is measured at the compressor suction gauge port connection. kW = Total system power
 Design Super Heat 7°± 2 @ Suction Service Port 47 test condition

4 Tons

	Outdoor Ambient Temperature																	
	65	60	55	50	47	45	40	35	30	25	20	17	15	10	5	0	-5	-10
MBh	57.8	54.7	51.5	48.2	46.0	44.6	41.4	38.2	33.2	30.6	28.2	26.6	25.6	23.0	20.4	17.8	15.2	12.4
T/R	33.5	31.7	29.8	27.9	26.6	25.8	24.0	22.1	19.2	17.7	16.3	15.4	14.8	13.3	11.8	10.3	8.8	7.2
kW	4.03	3.96	3.88	3.81	3.77	3.73	3.66	3.59	3.39	3.32	3.25	3.21	3.18	3.11	3.04	2.97	2.90	2.83
COP	4.20	4.05	3.88	3.70	3.58	3.49	3.31	3.11	2.86	2.69	2.53	2.42	2.36	2.16	1.96	1.75	1.53	1.28
HI PR	409	392	377	360	352	345	332	319	305	291	280	273	268	258	248	238	230	221
LO PR	135	126	118	108	102	98	90	80	73	65	57	53	51	43	37	31	27	22

Above information is for nominal CFM and 70° F indoor dry bulb. Instantaneous capacity listed.
 Design Superheat 7°± 2 @ suction access fittings; 47° test condition

5 Tons

	Outdoor Ambient Temperature																	
	65	60	55	50	47	45	40	35	30	25	20	17	15	10	5	0	-5	-10
MBh	73.6	69.7	65.6	61.3	58.6	56.7	52.7	48.6	41.4	38.2	35.2	33.2	32.0	28.7	25.5	22.2	18.9	15.5
ΔT	33.2	31.5	29.6	27.7	26.4	25.6	23.8	22.0	18.7	17.3	15.9	15.0	14.5	13.0	11.5	10.0	8.6	7.0
kW	4.89	4.79	4.70	4.60	4.54	4.50	4.41	4.32	4.10	4.01	3.92	3.87	3.83	3.74	3.65	3.56	3.46	3.37
Amps	16.3	15.1	14.1	13.3	12.8	12.6	11.9	11.3	10.8	10.4	9.9	9.7	9.5	9.1	8.5	8.0	7.4	6.7
COP	4.41	4.26	4.09	3.90	3.77	3.69	3.50	3.30	2.95	2.79	2.63	2.52	2.44	2.25	2.04	1.83	1.60	1.35
EER	15.1	14.5	14.0	13.3	12.9	12.6	11.9	11.3	10.1	9.5	9.0	8.6	8.4	7.7	7.0	6.2	5.5	4.6
Hi Pr	407	390	375	358	350	343	330	317	304	290	278	272	267	257	247	237	228	220
Lo Pr	125	116	109	100	94	91	83	74	67	60	53	49	47	40	34	29	25	20

Calculations are based on nominal CFM and 70°F indoor dry bulb. Design Super Heat 7°± 2 @ Suction Service Port 47 test condition
 kW = Total system power Amps = Outdoor unit amps (comp.+ fan)

HEAT KIT ELECTRICAL DATA (BLOWER ONLY, HEAT MODE) — 3 TONS

Model and Heat Kit Usage	MCA ¹ @ 208 / 240V	MOP ² (amps) @ 208 / 240V	Actual kW & BTU @ 240V	Recommended Airflow Range
CPH036***1D***	25	40		
EHK1-10	67 / 77	70 / 80	10	1250-1350 CFM
EHK1-15	89 / 103	90 / 110	15	1400-1440 CFM
CPH036***3D***	17	25		
EHK3-10	41 / 47	45 / 50	10	1250-1350 CFM
EHK3-15	54 / 62	60 / 70	15	1400-1440 CFM
CPH036***3B***	18	25		
EHK3-10	42 / 48	45 / 50	10	1250-1350 CFM
EHK3-15	55 / 63	60 / 70	15	1400-1440 CFM

Model and Heat Kit Usage	MCA ¹ @ 480V	MOP ² (amps) @ 480V	Actual kW & BTU @ 480V	Recommended Airflow Range
CPH036***4B***	10	15		
EHK4-10	25	25	10	1250-1350 CFM
EHK4-15	33	35	15	1400-1440 CFM

Model and Heat Kit Usage	MCA ¹ @ 575V	MOP ² (amps) @ 575V	Actual kW & BTU @ 575V	Recommended Airflow Range
CPH036***7B***	8	15		
EHK7-10	20	25	10	1400-1475 CFM
EHK7-15	26	30	15	1575-1650 CFM

¹ Minimum Circuit Ampacity

² Maximum Overcurrent Protection device

KW CORRECTION FACTORS

kW Correction Factor for 1- & 3-Phase Units					
Supply Voltage	240	230	220	210	208
Correction Factor	1	0.93	0.82	0.78	0.76

kW Correction Factor for 480V Units			
Actual Voltage	460	440	430
Correction Factor	0.92	0.84	0.8

For other voltage use $\text{voltage}^2 / 480^2$

kW Correction Factor for 575V Units			
Supply Voltage	560	550	540
Correction Factor	0.95	0.91	0.88

Multiply rated kW by correction factor to get actual kW

Minimum Airflow for Electric Heat

Heater Size (kW)	Minimum CFM
10	1,250
15	1,400

HEAT KIT ELECTRICAL DATA (BLOWER ONLY, HEAT MODE) — 4 TONS

Model and Heat Kit Usage	MCA ¹ @ 208 / 240V	MOP ² (amps) @ 208 / 240V	Actual kW & BTU @ 240V	Recommended Airflow Range
CPH048***1D***	29	45		
EHK1-10	70 / 81	80 / 90	10	1400-1800 CFM
EHK1-15	93 / 107	100 / 110	15	1575-1800 CFM
EHK1-18	107 / 123	110 / 125	18	1575-1800 CFM
CPH048***3D***	21	30		
EHK3-10	44 / 51	45 / 60	10	1400-1800 CFM
EHK3-15	57 / 66	60 / 70	15	1575-1800 CFM
EHK3-18	65 / 75	70 / 80	18	1575-1800 CFM
CPH048***3B***	22	30		
EHK3-10	45 / 52	45 / 60	10	1400-1800 CFM
EHK3-15	58 / 67	60 / 70	15	1575-1800 CFM
EHK3-18	66 / 76	70 / 80	18	1575-1800 CFM

Model and Heat Kit Usage	MCA ¹ @ 480V	MOP ² (amps) @ 480V	Actual kW & BTU @ 480V	Recommended Airflow Range
CPH048***4B***	10	15		
EHK4-10	25	30	10	1400-1800 CFM
EHK4-15	33	35	15	1575-1800 CFM
EHK4-18	37	40	18	1575-1800 CFM

Model and Heat Kit Usage	MCA ¹ @ 575V	MOP ² (amps) @ 575V	Actual kW & BTU @ 575V	Recommended Airflow Range
CPH048***7B***	8	15		
EHK7-10	21	25	10	1400-1800 CFM
EHK7-15	27	30	15	1575-1800 CFM
EHK7-18	31	35	18	1575-1800 CFM

¹ Minimum Circuit Ampacity

² Maximum Overcurrent Protection device

KW CORRECTION FACTORS

kW Correction Factor for 1- & 3-Phase Units					
Supply Voltage	240	230	220	210	208
Correction Factor	1	0.93	0.82	0.78	0.76

kW Correction Factor for 480V Units			
Actual Voltage	460	440	430
Correction Factor	0.92	0.84	0.8

For other voltage use $\text{voltage}^2 / 480^2$

kW Correction Factor for 575V Units			
Supply Voltage	560	550	540
Correction Factor	0.95	0.91	0.88

Multiply rated kW by correction factor to get actual kW.

MINIMUM AIRFLOW FOR ELECTRIC HEAT

Heater Size	Minimum CFM
10 kW	1,400
15 kW	1,575
18 kW	1,575

HEAT KIT ELECTRICAL DATA (BLOWER ONLY, HEAT MODE) — 5 TONS

Model and Heat Kit Usage	MCA ¹ @ 208 / 240V	MOP ² (amps) @ 208 / 240V	Actual kW & BTU @ 240V	Recommended Airflow Range	Speed Tap
CPH060***1D***	42	60			
EHK1-10	82 / 94	90 / 110	10	1750-2250 CFM	T3, T4, T5
EHK1-15	104 / 120	110 / 125	15	1750-2250 CFM	T3, T4, T5
EHK1-20	127 / 146	150 / 150	20	1850-2250 CFM	T5
CPH060***3D***	29	45			
EHK3-10	51 / 59	60 / 60	10	1750-2250 CFM	T3, T4, T5
EHK3-15	64 / 74	70 / 80	15	1750-2250 CFM	T3, T4, T5
EHK3-20	77 / 89	80 / 90	20	1850-2250 CFM	T5
EHK3-25	90 / 104	100 / 110	25		
CPH060***3B***	25	40			
EHK3-10	48 / 55	50 / 60	10	1750-2250 CFM	T3, T4, T5
EHK3-15	61 / 70	70 / 80	15	1750-2250 CFM	T3, T4, T5
EHK3-20	74 / 85	80 / 90	20	1850-2250 CFM	T5
EHK3-25	87 / 100	90 / 110	25		

Model and Heat Kit Usage	MCA ¹ @ 480V	MOP ² (amps) @ 480V	Actual kW & BTU @ 480V	Recommended Airflow Range
CPH060***4B***	12	20		
EHK4-10	27	30	10	1750-2250 CFM
EHK4-15	35	40	15	1750-2250 CFM
EHK4-20	43	45	20	1850-2250 CFM
EHK4-25	50	60	25	---

Model and Heat Kit Usage	MCA ¹ @ 575V	MOP ² (amps) @ 575V	Actual kW & BTU @ 575V	Recommended Airflow Range
CPH060***7B***	10	15		
EHK7-10	23	25	10	1750-2250 CFM
EHK7-15	29	30	15	1750-2250 CFM
EHK7-20	35	40	20	1850-2250 CFM
EHK7-25	41	45	25	---

¹ Minimum Circuit Ampacity

² Maximum Overcurrent Protection Device

KW CORRECTION FACTORS

kW Correction Factor for 1- & 3-Phase Units					
Supply Voltage	240	230	220	210	208
Correction Factor	1	0.93	0.82	0.78	0.76

kW Correction Factor for 480V Units			
Actual Voltage	460	440	430
Correction Factor	0.92	0.84	0.8

For other voltage use $\text{voltage}^2 / 480^2$

kW Correction Factor for 575V Units			
Supply Voltage	560	550	540
Correction Factor	0.95	0.91	0.88

Multiply rated kW by correction factor to get actual kW

MINIMUM AIRFLOW FOR ELECTRIC HEAT

Heater Size	Minimum CFM
10 kW	1,750
15 kW	1,750
20 kW	1,850

EXPANDED COOLING DATA — 3 TONS

IDB		Outdoor Ambient Temperature																													
		65					75					85					95					105					115				
		Entering Indoor Wet Bulb Temperature																													
Airflow	59	63	67	71	59	63	67	71	59	63	67	71	59	63	67	71	59	63	67	71	59	63	67	71	59	63	67	71			
1350	MBh	34.3	35.5	38.9	-	33.5	34.7	38.0	-	32.7	33.9	37.1	-	31.9	33.1	36.2	-	30.3	31.4	34.4	-	28.1	29.1	31.9	-	28.1	29.1	31.9	-		
	S/T	0.74	0.62	0.43	-	0.77	0.64	0.45	-	0.79	0.66	0.46	-	0.82	0.68	0.47	-	0.85	0.71	0.49	-	0.85	0.71	0.49	-	0.85	0.71	0.49	-		
	ΔT	17	15	11	-	18	15	12	-	18	15	12	-	18	15	12	-	17	15	11	-	16	14	11	-	16	14	11	-		
	Hi PR	226	243	257	-	254	273	288	-	288	310	328	-	328	353	373	-	369	398	420	-	408	439	464	-	408	439	464	-		
	Lo PR	105	112	122	-	111	118	129	-	115	122	134	-	121	129	140	-	127	135	147	-	131	139	152	-	131	139	152	-		
	MBh	33.3	34.5	37.8	-	32.5	33.7	36.9	-	31.7	32.9	36.1	-	31.0	32.1	35.2	-	29.4	30.5	33.4	-	27.3	28.3	31.0	-	27.3	28.3	31.0	-		
70	S/T	0.71	0.59	0.41	-	0.73	0.61	0.43	-	0.75	0.63	0.44	-	0.78	0.65	0.45	-	0.81	0.67	0.47	-	0.81	0.68	0.47	-	0.81	0.68	0.47	-		
	ΔT	18	16	12	-	18	16	12	-	18	16	12	-	18	16	12	-	18	16	12	-	17	15	11	-	17	15	11	-		
	Hi PR	224	241	254	-	251	270	285	-	285	307	324	-	325	350	369	-	366	394	416	-	404	435	459	-	404	435	459	-		
	Lo PR	104	110	121	-	110	117	127	-	114	121	132	-	120	127	139	-	125	133	146	-	130	138	151	-	130	138	151	-		
	MBh	30.7	31.9	34.9	-	30.0	31.1	34.1	-	29.3	30.4	33.3	-	28.6	29.6	32.5	-	27.2	28.2	30.8	-	25.2	26.1	28.6	-	25.2	26.1	28.6	-		
	S/T	0.68	0.57	0.40	-	0.71	0.59	0.41	-	0.73	0.61	0.42	-	0.75	0.63	0.43	-	0.78	0.65	0.45	-	0.78	0.66	0.45	-	0.78	0.66	0.45	-		
1050	ΔT	18	16	12	-	19	16	12	-	19	16	12	-	19	16	12	-	19	16	12	-	17	15	11	-	17	15	11	-		
	Hi PR	217	233	247	-	243	262	277	-	277	298	315	-	315	339	358	-	355	382	403	-	392	422	445	-	392	422	445	-		
	Lo PR	101	107	117	-	106	113	124	-	111	118	128	-	116	124	135	-	122	129	141	-	126	134	146	-	126	134	146	-		
	MBh	34.9	35.9	38.9	41.7	34.1	35.1	38.0	40.7	33.3	34.2	37.1	39.8	32.4	33.4	36.2	38.8	30.8	31.7	34.4	36.9	28.6	29.4	31.8	34.2	28.6	29.4	31.8	34.2		
	S/T	0.84	0.76	0.57	0.37	0.88	0.78	0.59	0.38	0.90	0.80	0.61	0.39	0.93	0.83	0.63	0.40	0.96	0.86	0.65	0.42	0.97	0.87	0.66	0.42	0.97	0.87	0.66	0.42		
	ΔT	20	18	15	10	20	19	15	11	20	19	15	11	20	19	15	11	20	19	15	11	19	17	14	10	19	17	14	10		
75	Hi PR	228	246	259	271	256	276	291	304	291	313	331	345	332	357	377	393	373	402	424	442	412	444	469	489	412	444	469	489		
	Lo PR	106	113	123	131	112	119	130	138	116	124	135	144	122	130	142	151	128	136	149	158	132	141	154	164	132	141	154	164		
	MBh	33.9	34.9	37.7	40.5	33.1	34.1	36.9	39.6	32.3	33.2	36.0	38.6	31.5	32.4	35.1	37.7	29.9	30.8	33.3	35.8	27.7	28.5	30.9	33.2	27.7	28.5	30.9	33.2		
	S/T	0.81	0.72	0.55	0.35	0.84	0.75	0.57	0.36	0.86	0.77	0.58	0.37	0.88	0.79	0.60	0.38	0.92	0.82	0.62	0.40	0.93	0.83	0.63	0.40	0.93	0.83	0.63	0.40		
	ΔT	21	19	16	11	21	19	16	11	21	20	16	11	21	20	16	11	21	19	16	11	20	18	15	10	20	18	15	10		
	Hi PR	226	243	257	268	254	273	288	301	288	310	328	342	328	353	373	389	369	398	420	438	408	439	464	484	408	439	464	484		
1050	Lo PR	105	112	122	130	111	118	129	137	115	123	134	142	121	129	140	150	127	135	147	157	131	139	152	162	131	139	152	162		
	MBh	31.3	32.2	34.8	37.4	30.5	31.4	34.0	36.5	29.8	30.7	33.2	35.6	29.1	29.9	32.4	34.8	27.6	28.4	30.8	33.0	25.6	26.3	28.5	30.6	25.6	26.3	28.5	30.6		
	S/T	0.78	0.69	0.53	0.34	0.81	0.72	0.55	0.35	0.83	0.74	0.56	0.36	0.85	0.76	0.58	0.37	0.88	0.79	0.60	0.39	0.89	0.80	0.60	0.39	0.89	0.80	0.60	0.39		
	ΔT	21	20	16	11	22	20	16	11	22	20	16	11	22	20	16	11	21	20	16	11	20	18	15	10	20	18	15	10		
	Hi PR	219	236	249	260	246	265	279	292	280	301	318	332	319	343	362	378	358	386	407	425	396	426	450	469	396	426	450	469		
	Lo PR	102	108	118	126	107	114	125	133	112	119	130	138	117	125	136	145	123	131	143	152	127	135	148	157	127	135	148	157		

IDB = Entering Indoor Dry Bulb Temperature
 Shaded area reflects ACCA (TVA) conditions.
 Design Superheat 7±2 °F; Design Subcooling 12 ±2 °F pressures measured @ the suction and liquid service ports, ARI 95 test conditions
 High and low pressures are measured at the liquid and suction service ports.

EXPANDED COOLING DATA — 3 TONS (CONT.)

IDB		Outdoor Ambient Temperature																													
		65					75					85					95					105					115				
		Airflow	59	63	67	71	59	63	67	71	59	63	67	71	59	63	67	71	59	63	67	71	59	63	67	71					
		Entering Indoor Wet Bulb Temperature																													
1350	MBh	35.5	36.3	38.8	41.4	34.7	35.4	37.9	40.5	33.8	34.6	37.0	39.5	33.0	33.7	36.1	38.5	31.4	32.1	34.2	36.6	29.1	29.7	31.7	33.9						
	S/T	0.93	0.87	0.71	0.53	0.96	0.90	0.73	0.55	1.00	0.92	0.75	0.56	1.00	0.95	0.78	0.58	1.00	1.00	0.81	0.60	1.00	1.00	0.81	0.61						
	ΔT	22	21	19	15	23	22	19	15	23	22	19	15	22	22	19	15	21	22	19	15	20	20	18	14						
	Hi/PR	231	248	262	273	259	278	294	307	294	317	334	349	335	361	381	397	377	406	428	447	417	448	473	494						
1200	Lo/PR	107	114	124	132	113	120	131	140	117	125	136	145	123	131	143	153	129	138	150	160	134	142	155	165						
	MBh	34.5	35.2	37.6	40.2	33.7	34.4	36.8	39.3	32.9	33.6	35.9	38.4	32.1	32.8	35.0	37.4	30.5	31.1	33.3	35.5	28.2	28.8	30.8	32.9						
	S/T	0.88	0.83	0.67	0.50	0.92	0.86	0.70	0.52	0.94	0.88	0.72	0.54	0.97	0.91	0.74	0.55	1.00	0.94	0.77	0.57	1.00	0.95	0.77	0.58						
	ΔT	23	22	19	16	24	23	20	16	24	23	20	16	24	23	20	16	23	22	20	16	22	21	18	15						
1050	Hi/PR	228	246	259	271	256	276	291	304	291	313	331	345	332	357	377	393	373	402	424	442	412	444	469	489						
	Lo/PR	106	113	123	131	112	119	130	138	116	124	135	144	122	130	142	151	128	136	149	158	132	141	154	164						
	MBh	31.8	32.5	34.7	37.1	31.1	31.7	33.9	36.3	30.3	31.0	33.1	35.4	29.6	30.2	32.3	34.5	28.1	28.7	30.7	32.8	26.0	26.6	28.4	30.4						
	S/T	0.85	0.80	0.65	0.49	0.88	0.83	0.67	0.50	0.91	0.85	0.69	0.52	0.93	0.88	0.71	0.53	0.97	0.91	0.74	0.55	0.98	0.92	0.75	0.56						
85	ΔT	24	23	20	16	24	23	20	16	24	23	20	16	24	23	20	16	24	23	20	16	22	21	19	15						
	Hi/PR	221	238	252	262	248	267	282	294	283	304	321	335	322	346	366	381	362	390	411	429	400	430	455	474						
	Lo/PR	103	109	119	127	109	115	126	134	113	120	131	140	119	126	138	147	124	132	144	154	128	137	149	159						
	MBh	36.1	36.8	38.6	41.1	35.3	36.0	37.7	40.2	34.4	35.1	36.8	39.2	33.6	34.2	35.9	38.3	31.9	32.5	34.1	36.4	29.6	30.1	31.6	33.7						
1350	S/T	0.97	0.94	0.85	0.69	1.00	0.97	0.88	0.71	1.00	1.00	0.90	0.73	1.00	1.00	0.93	0.75	1.00	1.00	0.96	0.78	1.00	1.00	0.97	0.79						
	ΔT	24	24	22	19	24	24	22	19	23	24	23	19	23	23	23	20	22	22	22	19	20	21	21	18						
	Hi/PR	233	251	265	276	261	281	297	310	297	320	338	352	338	364	385	401	381	410	433	451	421	453	478	499						
	Lo/PR	108	115	126	134	114	121	133	141	119	126	138	147	125	133	145	154	131	139	152	162	135	144	157	167						
1200	MBh	35.1	35.7	37.4	39.9	34.3	34.9	36.6	39.0	33.4	34.1	35.7	38.1	32.6	33.3	34.8	37.2	31.0	31.6	33.1	35.3	28.7	29.3	30.6	32.7						
	S/T	0.93	0.89	0.81	0.65	0.96	0.93	0.84	0.68	0.98	0.95	0.86	0.70	1.00	0.98	0.89	0.72	1.00	1.00	0.92	0.75	1.00	1.00	0.93	0.75						
	ΔT	25	24	23	20	25	25	23	20	25	25	23	20	25	25	24	20	24	24	23	20	22	22	22	19						
	Hi/PR	231	248	262	273	259	278	294	307	294	317	334	349	335	361	381	397	377	406	428	447	417	448	473	494						
1050	Lo/PR	107	114	124	132	113	120	131	140	117	125	136	145	123	131	143	153	129	138	150	160	134	142	155	165						
	MBh	32.4	33.0	34.6	36.9	31.6	32.2	33.8	36.0	30.9	31.5	32.9	35.1	30.1	30.7	32.1	34.3	28.6	29.2	30.5	32.6	26.5	27.0	28.3	30.2						
	S/T	0.89	0.86	0.78	0.63	0.93	0.89	0.81	0.65	0.95	0.92	0.83	0.67	0.98	0.95	0.85	0.69	1.00	0.98	0.89	0.72	1.00	0.99	0.89	0.72						
	ΔT	25	25	24	20	26	25	24	21	26	25	24	21	26	25	24	21	25	25	24	20	23	23	22	19						
85	Hi/PR	224	241	254	265	251	270	285	297	285	307	324	338	325	350	369	385	366	393	416	433	404	435	459	479						
	Lo/PR	104	110	121	128	110	117	127	136	114	121	132	141	120	127	139	148	125	133	146	155	130	138	151	160						

IDB		Outdoor Ambient Temperature																													
		65					75					85					95					105					115				
		Airflow	59	63	67	71	59	63	67	71	59	63	67	71	59	63	67	71	59	63	67	71	59	63	67	71					
		Entering Indoor Wet Bulb Temperature																													
1350	MBh	35.5	36.3	38.8	41.4	34.7	35.4	37.9	40.5	33.8	34.6	37.0	39.5	33.0	33.7	36.1	38.5	31.4	32.1	34.2	36.6	29.1	29.7	31.7	33.9						
	S/T	0.93	0.87	0.71	0.53	0.96	0.90	0.73	0.55	1.00	0.92	0.75	0.56	1.00	0.95	0.78	0.58	1.00	1.00	0.81	0.60	1.00	1.00	0.81	0.61						
	ΔT	22	21	19	15	23	22	19	15	23	22	19	15	22	22	19	15	21	22	19	15	20	20	18	14						
	Hi/PR	231	248	262	273	259	278	294	307	294	317	334	349	335	361	381	397	377	406	428	447	417	448	473	494						
1200	Lo/PR	107	114	124	132	113	120	131	140	117	125	136	145	123	131	143	153	129	138	150	160	134	142	155	165						
	MBh	34.5	35.2	37.6	40.2	33.7	34.4	36.8	39.3	32.9	33.6	35.9	38.4	32.1	32.8	35.0	37.4	30.5	31.1	33.3	35.5	28.2	28.8	30.8	32.9						
	S/T	0.88	0.83	0.67	0.50	0.92	0.86	0.70	0.52	0.94	0.88	0.72	0.54	0.97	0.91	0.74	0.55	1.00	0.94	0.77	0.57	1.00	0.95	0.77	0.58						
	ΔT	23	22	19	16	24	23	20	16	24	23	20	16	24	23	20	16	23	22	20	16	22	21	18	15						
1050	Hi/PR	228	246	259	271	256	276	291	304	291	313	331	345	332	357	377	393	373	402	424	442	412	444	469	489						
	Lo/PR	106	113	123	131	112	119	130	138	116	124	135	144	122	130	142	151	128	136	149	158	132	141	154	164						
	MBh	31.8	32.5	34.7	37.1	31.1	31.7	33.9	36.3	30.3	31.0	33.1	35.4	29.6	30.2	32.3	34.5	28.1	28.7	30.7	32.8	26.0	26.6	28.4	30.4						
	S/T	0.85	0.80	0.65	0.49	0.88	0.83	0.67	0.50	0.91	0.85	0.69	0.52	0.93	0.88	0.71	0.53	0.97	0.91	0.74	0.55	0.98	0.92	0.75	0.56						
85	ΔT	24	23	20	16	24	23	20	16	24	23	20	16	24	23	20	16	24	23	20	16	22	21	19	15						
	Hi/PR	221	238	252	262	248	267	282	294	283	304	321	335	322	346	366	381	362	390	411	429	400	430	455	474						
	Lo/PR	103	109	119	127	109	115	126	134	113	120	131	140	119	126	138	147	124	132	144	154	128	137	149	159						
	MBh	36.1	36.8	38.6	41.1	35.3	36.0	37.7	40.2	34.4	35.1	36.8	39.2	33.6	34.2	35.9	38.3	31.9	32.5	34.1	36.4	29.6	30.1	31.6	33.7						
1350	S/T	0.97	0.94	0.85	0.69	1.00	0.97	0.88	0.71	1.00	1.00	0.90	0.73	1.00	1.00	0.93	0.75	1.00	1.00	0.96	0.78	1.00	1.00	0.97	0.79						
	ΔT	24	24	22	19	24	24	22	19	23	24	23	19	23	23	23	20	22	22	22	19	20	21	21	18						
	Hi/PR	233	251	265	276	261	281	297	310	297	320	338	352	338	364	385	401	381	410	433	451	421	453	478	499						
	Lo/PR	108	115	126	134	114	121	133	141	119	126	138	147	125	133	145	154	131	139	152	162	135	144	157	167						
1200	MBh	35.1	35.7	37.4	39.9	34.3	34.9	36.6	39.0	33.4	34.1	35.7	38.1	32.6	33.3	34.8	37.2	31.0	31.6	33.1	35.3	28.7	29.3	30.6	32.7						
	S/T	0.93	0.89	0.81	0.65	0.96	0.93	0.84	0.68	0.98	0.95	0.86	0.70	1.00	0.98	0.89	0.72	1.00	1.00	0.92	0.75	1.00	1.00	0.93							

EXPANDED COOLING DATA — 4 TONS

IDB		Outdoor Ambient Temperature																																			
		65						75						85						95						105						115					
		Airflow		59	63	67	71	59	63	67	71	59	63	67	71	59	63	67	71	59	63	67	71	59	63	67	71										
70	1800	MBh	45.1	46.7	51.2	-	44.0	45.6	50.0	-	43.0	44.5	48.8	-	41.9	43.5	47.6	-	39.8	41.3	45.2	-	36.9	38.2	41.9	-											
		S/T	0.75	0.63	0.44	-	0.78	0.65	0.45	-	0.80	0.67	0.46	-	0.83	0.69	0.48	-	0.86	0.72	0.50	-	0.86	0.72	0.50	-											
		ΔT	17	15	11	-	18	15	12	-	18	15	12	-	18	15	12	-	17	15	11	-	16	14	11	-											
		kW	3.17	3.23	3.33	-	3.39	3.46	3.56	-	3.59	3.66	3.77	-	3.76	3.84	3.95	-	3.91	3.99	4.11	-	4.03	4.11	4.24	-											
		HI PR	231	249	263	-	260	279	295	-	295	318	335	-	336	362	382	-	378	407	430	-	418	450	475	-											
		LO PR	109	116	127	-	115	123	134	-	120	128	139	-	126	134	146	-	132	140	153	-	137	145	159	-											
	1600	MBh	43.8	45.4	49.7	-	42.7	44.3	48.5	-	41.7	43.2	47.4	-	40.7	42.2	46.2	-	38.7	40.1	43.9	-	35.8	37.1	40.7	-											
		S/T	0.72	0.60	0.42	-	0.74	0.62	0.43	-	0.76	0.64	0.44	-	0.79	0.66	0.46	-	0.82	0.68	0.47	-	0.82	0.69	0.48	-											
		ΔT	18	16	12	-	18	16	12	-	18	16	12	-	18	16	12	-	18	16	12	-	17	15	11	-											
		kW	3.15	3.21	3.30	-	3.37	3.43	3.53	-	3.56	3.63	3.74	-	3.73	3.81	3.92	-	3.88	3.95	4.08	-	4.00	4.08	4.21	-											
		HI PR	229	246	260	-	257	277	292	-	292	315	332	-	333	358	378	-	374	403	426	-	414	445	470	-											
		LO PR	108	115	126	-	114	122	133	-	119	126	138	-	125	133	145	-	131	139	152	-	135	144	157	-											
1400	MBh	40.4	41.9	45.9	-	39.5	40.9	44.8	-	38.5	39.9	43.7	-	37.6	38.9	42.7	-	35.7	37.0	40.5	-	33.1	34.3	37.5	-												
	S/T	0.69	0.58	0.40	-	0.72	0.60	0.42	-	0.74	0.61	0.43	-	0.76	0.63	0.44	-	0.79	0.66	0.46	-	0.80	0.66	0.46	-												
	ΔT	18	16	12	-	19	16	12	-	19	16	12	-	19	16	12	-	18	16	12	-	17	15	11	-												
	kW	3.08	3.14	3.23	-	3.29	3.36	3.46	-	3.48	3.55	3.65	-	3.65	3.72	3.83	-	3.79	3.86	3.98	-	3.91	3.99	4.11	-												
	HI PR	222	239	252	-	249	268	283	-	284	305	322	-	323	347	367	-	363	391	413	-	401	432	456	-												
	LO PR	105	112	122	-	111	118	129	-	115	123	134	-	121	129	140	-	127	135	147	-	131	140	152	-												

IDB		Outdoor Ambient Temperature																																			
		65						75						85						95						105						115					
		Airflow		59	63	67	71	59	63	67	71	59	63	67	71	59	63	67	71	59	63	67	71	59	63	67	71										
75	1800	MBh	45.8	47.2	51.1	54.8	44.8	46.1	49.9	53.6	43.7	45.0	48.7	52.3	42.6	43.9	47.5	51.0	40.5	41.7	45.1	48.5	37.5	38.6	41.8	44.9											
		S/T	0.86	0.77	0.58	0.37	0.89	0.79	0.60	0.39	0.91	0.81	0.62	0.40	0.94	0.84	0.64	0.41	0.97	0.87	0.66	0.42	0.98	0.88	0.67	0.43											
		ΔT	20	18	15	10	20	19	15	11	20	19	15	11	20	19	15	11	20	19	15	11	19	17	14	10											
		kW	3.20	3.26	3.35	3.45	3.42	3.49	3.59	3.70	3.61	3.69	3.80	3.91	3.79	3.87	3.98	4.11	3.94	4.02	4.14	4.27	4.06	4.15	4.28	4.41											
		HI PR	234	251	266	277	262	282	298	311	298	321	339	353	340	366	386	403	382	411	434	453	422	454	480	500											
		LO PR	110	117	128	136	117	124	135	144	121	129	141	150	127	135	148	157	133	142	155	165	138	147	160	171											
	1600	MBh	44.5	45.8	49.6	53.2	43.5	44.8	48.4	52.0	42.4	43.7	47.3	50.8	41.4	42.6	46.1	49.5	39.3	40.5	43.8	47.0	36.4	37.5	40.6	43.6											
		S/T	0.82	0.73	0.55	0.36	0.85	0.76	0.57	0.37	0.87	0.78	0.59	0.38	0.90	0.80	0.61	0.39	0.93	0.83	0.63	0.40	0.94	0.84	0.63	0.41											
		ΔT	21	19	16	11	21	19	16	11	21	19	16	11	21	20	16	11	21	19	16	11	20	18	15	10											
		kW	3.17	3.23	3.33	3.42	3.39	3.46	3.56	3.67	3.59	3.66	3.77	3.88	3.76	3.84	3.95	4.07	3.91	3.99	4.11	4.24	4.03	4.12	4.24	4.38											
		HI PR	231	249	263	274	260	279	295	308	295	318	336	350	336	362	382	399	378	407	430	448	418	450	475	495											
		LO PR	109	116	127	135	115	123	134	143	120	128	139	148	126	134	146	156	132	140	153	163	137	145	159	169											
1400	MBh	41.1	42.3	45.8	49.1	40.1	41.3	44.7	48.0	39.2	40.3	43.7	46.8	38.2	39.3	42.6	45.7	36.3	37.4	40.5	43.4	33.6	34.6	37.5	40.2												
	S/T	0.79	0.70	0.53	0.34	0.82	0.73	0.55	0.36	0.84	0.75	0.57	0.36	0.86	0.77	0.58	0.38	0.90	0.80	0.61	0.39	0.90	0.81	0.61	0.39												
	ΔT	21	20	16	11	22	20	16	11	22	20	16	11	22	20	16	11	21	20	16	11	20	18	15	10												
	kW	3.10	3.16	3.25	3.35	3.32	3.38	3.48	3.58	3.51	3.58	3.68	3.79	3.67	3.75	3.86	3.98	3.82	3.89	4.01	4.14	3.94	4.02	4.14	4.27												
	HI PR	224	242	255	266	252	271	286	298	286	308	325	339	326	351	371	387	367	395	417	435	405	436	461	481												
	LO PR	106	113	123	131	112	119	130	138	116	124	135	144	122	130	142	151	128	136	149	158	132	141	154	164												

IDB = Entering Indoor Dry Bulb Temperature Shaded area reflects ACCA (TVA) conditions High and low pressures are measured at the liquid and suction access fittings.
 Design Superheat 7±2 °F & Design Subcooling 12 ±2 °F pressures measured @ the suction and liquid access fittings; ARI 95° test conditions

EXPANDED COOLING DATA — 4 TONS (CONT.)

IDB	Airflow	Outdoor Ambient Temperature																																			
		65						75						85						95						105						115					
		59	63	67	71	59	63	67	71	59	63	67	71	59	63	67	71	59	63	67	71	59	63	67	71	59	63	67	71	59	63	67	71				
80	1800	MBh	46.7	47.7	50.9	54.4	45.6	46.6	49.7	53.2	44.5	45.5	48.6	51.9	43.4	44.3	47.4	50.6	41.2	42.1	45.0	48.1	38.2	39.0	41.7	44.6											
		S/T	0.94	0.88	0.72	0.54	1.00	0.91	0.74	0.56	1.00	0.94	0.76	0.57	1.00	0.97	0.79	0.59	1.00	1.00	0.82	0.61	1.00	1.00	0.82	0.62											
		ΔT	22	21	19	15	23	22	19	15	22	22	19	15	22	22	19	15	21	22	19	15	20	20	18	14											
		kW	3.22	3.28	3.38	3.47	3.44	3.51	3.62	3.72	3.64	3.72	3.83	3.94	3.82	3.90	4.01	4.14	3.97	4.05	4.17	4.30	4.09	4.18	4.31	4.45											
		HI PR	236	254	268	280	265	285	301	314	301	324	342	357	343	369	390	407	386	415	439	457	426	459	485	505											
	1600	LO PR	111	119	129	138	118	125	137	146	122	130	142	151	129	137	149	159	135	143	156	167	139	148	162	172											
		MBh	45.3	46.3	49.5	52.9	44.2	45.2	48.3	51.6	43.2	44.1	47.2	50.4	42.1	43.1	46.0	49.2	40.0	40.9	43.7	46.7	37.1	37.9	40.5	43.3											
		S/T	0.90	0.84	0.68	0.51	0.93	0.87	0.71	0.53	0.95	0.89	0.73	0.54	0.98	0.92	0.75	0.56	1.00	0.96	0.78	0.58	1.00	0.96	0.78	0.59											
		ΔT	23	22	19	16	24	23	20	16	24	23	20	16	24	23	20	16	23	22	20	16	21	21	18	15											
		kW	3.20	3.26	3.35	3.45	3.42	3.49	3.59	3.70	3.62	3.69	3.80	3.91	3.79	3.87	3.98	4.11	3.94	4.02	4.14	4.27	4.06	4.15	4.28	4.41											
1400	HI PR	234	251	266	277	262	282	298	311	298	321	339	353	340	366	386	403	382	411	434	453	422	454	480	500												
	LO PR	110	117	128	136	117	124	135	144	121	129	141	150	127	135	148	157	133	142	155	165	138	147	160	171												
	MBh	41.8	42.7	45.6	48.8	40.8	41.7	44.6	47.7	39.9	40.7	43.5	46.5	38.9	39.7	42.5	45.4	36.9	37.8	40.3	43.1	34.2	35.0	37.4	39.9												
	S/T	0.86	0.81	0.66	0.49	0.90	0.84	0.68	0.51	0.92	0.86	0.70	0.52	0.95	0.89	0.72	0.54	0.98	0.92	0.75	0.56	0.99	0.93	0.76	0.57												
	ΔT	24	23	20	16	24	23	20	16	24	23	20	16	24	23	20	16	24	23	20	16	22	21	19	15												
85	1800	kW	3.13	3.19	3.28	3.37	3.34	3.41	3.51	3.61	3.53	3.60	3.71	3.82	3.70	3.78	3.89	4.01	3.84	3.92	4.04	4.17	3.97	4.05	4.17	4.31											
		HI PR	227	244	258	269	254	274	289	301	289	311	329	343	329	355	374	391	371	399	421	439	410	441	465	485											
		LO PR	107	114	124	132	113	120	131	140	118	125	136	145	123	131	143	153	129	138	150	160	134	142	155	166											
		MBh	47.5	48.4	50.7	54.1	46.4	47.3	49.5	52.8	45.3	46.1	48.3	51.6	44.2	45.0	47.1	50.3	42.0	42.8	44.8	47.8	38.9	39.6	41.5	44.3											
		S/T	0.98	0.95	0.86	0.70	1.00	0.98	0.89	0.72	1.00	1.00	0.91	0.74	1.00	1.00	0.94	0.76	1.00	1.00	0.98	0.79	1.00	1.00	0.98	0.80											
1600	ΔT	24	23	22	19	24	24	22	19	23	24	22	19	23	23	23	20	21	22	22	19	20	20	21	18												
	kW	3.24	3.30	3.40	3.50	3.47	3.54	3.64	3.75	3.67	3.74	3.86	3.97	3.85	3.93	4.05	4.17	4.00	4.08	4.21	4.34	4.13	4.21	4.34	4.48												
	HI PR	238	257	271	283	268	288	304	317	304	327	346	361	347	373	394	411	390	420	443	462	431	464	489	510												
	LO PR	113	120	131	139	119	127	138	147	124	131	144	153	130	138	151	161	136	145	158	168	141	150	163	174												
	MBh	46.1	47.0	49.2	52.5	45.0	45.9	48.1	51.3	43.9	44.8	46.9	50.1	42.9	43.7	45.8	48.8	40.7	41.5	43.5	46.4	37.7	38.5	40.3	43.0												
1400	S/T	0.94	0.91	0.82	0.66	0.97	0.94	0.85	0.69	1.00	0.96	0.87	0.71	1.00	0.99	0.90	0.73	1.00	1.00	0.93	0.76	1.00	1.00	0.94	0.76												
	ΔT	25	24	23	20	25	25	23	20	25	25	23	20	25	25	24	20	23	24	23	20	22	22	22	19												
	kW	3.22	3.28	3.38	3.47	3.44	3.51	3.62	3.72	3.64	3.72	3.83	3.94	3.82	3.90	4.01	4.14	3.97	4.05	4.17	4.30	4.09	4.18	4.31	4.45												
	HI PR	236	254	268	280	265	285	301	314	301	324	342	357	343	369	390	407	386	415	439	457	426	459	485	505												
	LO PR	111	119	129	138	118	125	137	146	122	130	142	151	129	137	149	159	135	143	156	167	139	148	162	172												
85	1400	MBh	42.5	43.4	45.4	48.5	41.5	42.4	44.4	47.3	40.6	41.3	43.3	46.2	39.6	40.3	42.2	45.1	37.6	38.3	40.1	42.8	34.8	35.5	37.2	39.7											
		S/T	0.91	0.87	0.79	0.64	0.94	0.91	0.82	0.66	0.96	0.93	0.84	0.68	0.99	0.96	0.86	0.70	1.00	0.99	0.90	0.73	1.00	1.00	0.91	0.73											
		ΔT	25	25	24	20	26	25	24	21	26	25	24	21	26	25	24	21	25	25	24	20	23	23	22	19											
		kW	3.15	3.21	3.30	3.40	3.37	3.43	3.53	3.64	3.56	3.63	3.74	3.85	3.73	3.81	3.92	4.04	3.87	3.95	4.07	4.20	4.00	4.08	4.21	4.34											
		HI PR	229	246	260	271	257	276	292	304	292	314	332	346	333	358	378	394	374	403	425	444	414	445	470	490											
LO PR	108	115	126	134	114	121	133	141	119	126	138	147	125	133	145	154	131	139	152	162	135	144	157	167													

IDB = Entering Indoor Dry Bulb Temperature Shaded area reflects ARI Rating conditions High and low pressures are measured at the liquid and suction access fittings.
 Design Superheat 7±2 °F & Design Subcooling 12 ±2 °F pressures measured @ the suction and liquid access fittings; ARI 95° test conditions

EXPANDED COOLING DATA — 5 TONS

IDB	Airflow	Outdoor Ambient Temperature																							
		65				75				85				95				105				115			
		59	63	67	71	59	63	67	71	59	63	67	71	59	63	67	71	59	63	67	71	59	63	67	71
70	2306	58.4	60.5	66.3	-	57.0	59.1	64.8	-	55.7	57.7	63.2	-	54.3	56.3	61.7	-	51.6	53.5	58.6	-	47.8	49.6	54.3	-
	MBh	0.75	0.62	0.43	-	0.78	0.65	0.45	-	0.80	0.66	0.46	-	0.82	0.69	0.47	-	0.85	0.71	0.49	-	0.86	0.72	0.50	-
	S/T	17	15	11	-	18	15	12	-	18	15	12	-	18	15	12	-	18	15	12	-	16	14	11	-
	ΔT	4.00	4.08	4.21	-	4.30	4.39	4.53	-	4.57	4.67	4.82	-	4.81	4.92	5.08	-	5.01	5.12	5.29	-	5.19	5.30	5.48	-
	kW	10.5	10.8	11.1	-	11.4	11.6	12.0	-	12.3	12.6	13.0	-	13.1	13.5	13.9	-	14.0	14.3	14.8	-	14.8	15.1	15.6	-
	Amps	244	263	277	-	274	295	311	-	311	335	354	-	355	382	403	-	399	429	453	-	441	474	501	-
	Hi Pr	105	112	122	-	111	118	129	-	116	123	134	-	122	129	141	-	127	135	148	-	132	140	153	-
	Lo Pr	56.7	58.8	64.4	-	55.4	57.4	62.9	-	54.1	56.0	61.4	-	52.7	54.7	59.9	-	50.1	51.9	56.9	-	46.4	48.1	52.7	-
	MBh	0.71	0.60	0.41	-	0.74	0.62	0.43	-	0.76	0.63	0.44	-	0.78	0.65	0.45	-	0.81	0.68	0.47	-	0.82	0.68	0.47	-
	S/T	18	16	12	-	18	16	12	-	18	16	12	-	19	16	12	-	18	16	12	-	17	15	11	-
ΔT	3.97	4.05	4.18	-	4.27	4.36	4.50	-	4.54	4.63	4.78	-	4.77	4.88	5.03	-	4.97	5.08	5.25	-	5.14	5.26	5.43	-	
kW	10.4	10.7	11.0	-	11.3	11.5	11.9	-	12.2	12.5	12.9	-	13.0	13.3	13.8	-	13.8	14.2	14.6	-	14.6	15.0	15.5	-	
Amps	242	260	275	-	271	292	308	-	308	332	350	-	351	378	399	-	395	425	449	-	436	470	496	-	
Hi Pr	104	111	121	-	110	117	128	-	115	122	133	-	120	128	140	-	126	134	146	-	130	139	151	-	
Lo Pr	52.3	54.2	59.4	-	51.1	53.0	58.1	-	49.9	51.7	56.7	-	48.7	50.5	55.3	-	46.3	47.9	52.5	-	42.8	44.4	48.7	-	
MBh	0.69	0.57	0.40	-	0.71	0.60	0.41	-	0.73	0.61	0.42	-	0.75	0.63	0.44	-	0.78	0.65	0.45	-	0.79	0.66	0.46	-	
S/T	18	16	12	-	19	16	12	-	19	16	12	-	19	16	12	-	19	16	12	-	17	15	11	-	
ΔT	3.87	3.95	4.08	-	4.17	4.25	4.39	-	4.42	4.52	4.66	-	4.65	4.75	4.91	-	4.85	4.95	5.12	-	5.01	5.13	5.29	-	
kW	10.2	10.4	10.7	-	11.0	11.2	11.6	-	11.9	12.2	12.6	-	12.7	13.0	13.4	-	13.5	13.8	14.2	-	14.2	14.6	15.1	-	
Amps	234	252	266	-	263	283	299	-	299	322	340	-	341	367	387	-	383	412	435	-	423	456	481	-	
Hi Pr	101	108	118	-	107	114	124	-	111	118	129	-	117	124	136	-	122	130	142	-	127	135	147	-	
Lo Pr	59.4	61.2	66.2	71.0	58.0	59.7	64.7	69.4	56.6	58.3	63.1	67.7	55.2	56.9	61.6	66.1	52.5	54.0	58.5	62.8	48.6	50.1	54.2	58.2	
75	2306	0.85	0.76	0.58	0.37	0.88	0.79	0.60	0.38	0.90	0.81	0.61	0.39	0.93	0.83	0.63	0.41	0.97	0.87	0.66	0.42	0.98	0.87	0.66	0.43
	MBh	20	19	15	10	20	19	15	11	20	19	15	11	21	19	16	11	20	19	15	11	19	17	14	10
	S/T	4.03	4.11	4.24	4.38	4.34	4.43	4.57	4.72	4.61	4.71	4.86	5.02	4.85	4.96	5.12	5.29	5.05	5.17	5.34	5.52	5.23	5.35	5.52	5.71
	kW	10.6	10.9	11.2	11.6	11.5	11.7	12.1	12.5	12.4	12.7	13.1	13.6	13.3	13.6	14.0	14.5	14.1	14.4	14.9	15.5	14.9	15.3	15.8	16.4
	Amps	246	265	280	292	277	298	314	328	315	338	357	373	358	386	407	425	403	434	458	478	445	479	506	528
	Hi Pr	106	113	124	132	112	120	131	139	117	124	136	145	123	131	143	152	129	137	149	159	133	142	155	165
	Lo Pr	57.7	59.4	64.3	69.0	56.3	58.0	62.8	67.4	55.0	56.6	61.3	65.8	53.6	55.2	59.8	64.2	51.0	52.5	56.8	61.0	47.2	48.6	52.6	56.5
	MBh	0.81	0.73	0.55	0.35	0.84	0.75	0.57	0.37	0.86	0.77	0.58	0.38	0.89	0.80	0.60	0.39	0.92	0.83	0.63	0.40	0.93	0.83	0.63	0.41
	S/T	21	19	16	11	21	20	16	11	21	20	16	11	21	20	16	11	21	19	16	11	20	18	15	10
	ΔT	4.00	4.08	4.21	bb	4.30	4.40	4.54	4.68	4.57	4.67	4.82	4.98	4.81	4.92	5.08	5.25	5.01	5.12	5.29	5.47	5.19	5.30	5.48	5.66
kW	10.5	10.8	11.1	11.5	11.4	11.6	12.0	12.4	12.3	12.6	13.0	13.5	13.1	13.5	13.9	14.4	14.0	14.3	14.8	15.3	14.8	15.1	15.6	16.2	
Amps	244	263	277	289	274	295	311	325	311	335	354	369	355	382	403	420	399	429	453	473	441	474	501	523	
Hi Pr	105	112	122	130	111	118	129	138	116	123	134	143	122	129	141	150	127	136	148	158	132	140	153	163	
Lo Pr	53.2	54.8	59.3	63.7	52.0	53.5	57.9	62.2	50.7	52.2	56.6	60.7	49.5	51.0	55.2	59.2	47.0	48.4	52.4	56.3	43.6	44.9	48.6	52.1	
MBh	0.78	0.70	0.53	0.34	0.81	0.72	0.55	0.35	0.83	0.74	0.56	0.36	0.86	0.77	0.58	0.37	0.89	0.80	0.60	0.39	0.90	0.80	0.61	0.39	
S/T	21	20	16	11	22	20	16	11	22	20	16	11	22	20	16	11	21	20	16	11	20	18	15	10	
ΔT	3.90	3.99	4.11	4.24	4.20	4.29	4.43	4.57	4.46	4.56	4.70	4.86	4.69	4.79	4.95	5.11	4.89	5.00	5.16	5.33	5.06	5.17	5.34	5.52	
kW	10.3	10.5	10.8	11.2	11.1	11.3	11.7	12.1	12.0	12.3	12.7	13.1	12.8	13.1	13.5	14.0	13.6	13.9	14.4	14.9	14.4	14.7	15.2	15.8	
Amps	237	255	269	281	266	286	302	315	302	325	343	358	344	370	391	408	387	417	440	459	428	460	486	507	
Hi Pr	102	109	119	126	108	115	125	134	112	119	130	139	118	125	137	146	124	131	144	153	128	136	148	158	
Lo Pr	59.4	61.2	66.2	71.0	58.0	59.7	64.7	69.4	56.6	58.3	63.1	67.7	55.2	56.9	61.6	66.1	52.5	54.0	58.5	62.8	48.6	50.1	54.2	58.2	

IDB: Entering Indoor Dry Bulb Temperature

High and low pressures are measured at the liquid and suction service valves.

Shaded area is ARI Rating Conditions

Design Super Heat ±3 °F @ Suction Service port, ARI 95 test conditions

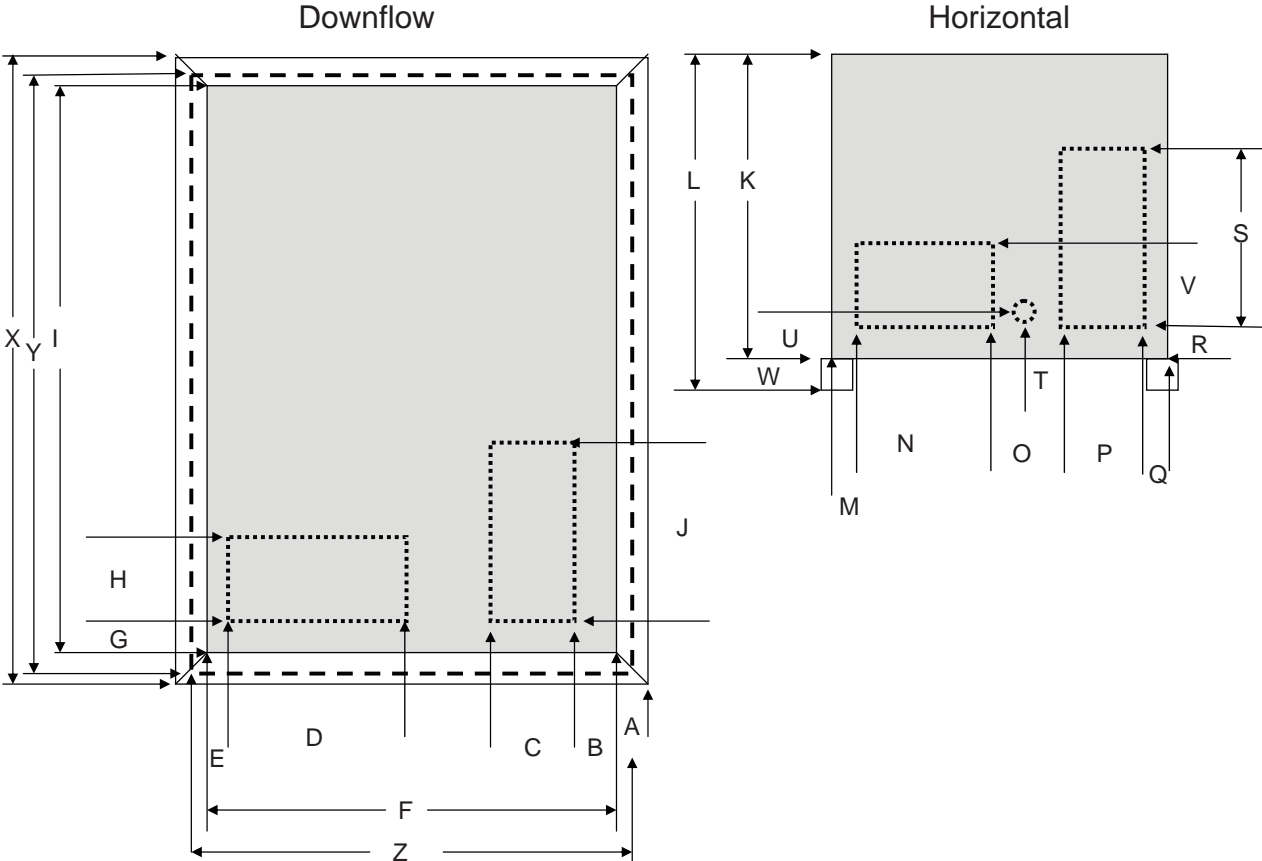
EXPANDED COOLING DATA — 5 TONS (CONT.)

IDB	Airflow	Outdoor Ambient Temperature																								
		65				75				85				95				105				115				
		59	63	67	71	59	63	67	71	59	63	67	71	59	63	67	71	59	63	67	71	59	63	67	71	
80	2306	MBh	60.4	61.8	66.0	70.5	59.0	60.3	64.5	68.9	57.6	58.9	62.9	67.3	56.2	57.5	61.4	65.6	53.4	54.6	58.3	62.3	49.5	50.6	54.0	57.7
		S/T	0.93	0.87	0.71	0.53	0.97	0.91	0.74	0.55	1.00	0.93	0.76	0.57	1.00	0.96	0.78	0.58	1.00	1.00	0.81	0.61	1.00	1.00	0.82	0.61
	ΔT	22	22	19	15	23	22	19	15	22	22	19	15	22	22	19	15	21	21	19	15	20	20	18	14	
	kW	4.06	4.15	4.28	4.42	4.37	4.47	4.61	4.76	4.65	4.75	4.90	5.07	4.89	5.00	5.16	5.33	5.10	5.21	5.38	5.56	5.27	5.39	5.57	5.76	
	Amps	10.7	11.0	11.3	11.7	11.6	11.8	12.2	12.7	12.5	12.8	13.3	13.7	13.4	13.7	14.1	14.7	14.2	14.6	15.0	15.6	15.0	15.4	15.9	16.5	
	Hi Pr	249	268	283	295	279	301	317	331	318	342	361	377	362	389	411	429	407	438	463	483	450	484	511	533	
	Lo Pr	108	114	125	133	114	121	132	141	118	126	137	146	124	132	144	153	130	138	151	161	134	143	156	166	
	MBh	58.7	60.0	64.1	68.5	57.3	58.6	62.6	66.9	56.0	57.2	61.1	65.3	54.6	55.8	59.6	63.7	51.9	53.0	56.6	60.5	48.0	49.1	52.4	56.1	
	S/T	0.89	0.83	0.68	0.51	0.92	0.86	0.70	0.53	0.95	0.89	0.72	0.54	0.98	0.92	0.74	0.56	1.00	0.95	0.77	0.58	1.00	0.96	0.78	0.58	
	ΔT	23	22	20	16	24	23	20	16	24	23	20	16	24	23	20	16	23	23	20	16	22	21	18	15	
kW	4.03	4.12	4.24	4.38	4.34	4.43	4.57	4.72	4.61	4.71	4.86	5.02	4.85	4.96	5.12	5.29	5.05	5.17	5.34	5.52	5.23	5.35	5.53	5.71		
Amps	10.6	10.9	11.2	11.6	11.5	11.7	12.1	12.5	12.4	12.7	13.1	13.6	13.3	13.6	14.0	14.5	14.1	14.4	14.9	15.5	14.9	15.3	15.8	16.4		
Hi Pr	247	265	280	292	277	298	314	328	315	339	357	373	358	386	407	425	403	434	458	478	445	479	506	528		
Lo Pr	106	113	124	132	112	120	131	139	117	124	136	145	123	131	143	152	129	137	149	159	133	142	155	165		
MBh	54.2	55.4	59.1	63.2	52.9	54.1	57.8	61.7	51.6	52.8	56.4	60.3	50.4	51.5	55.0	58.8	47.9	48.9	52.3	55.9	44.3	45.3	48.4	51.7		
S/T	0.86	0.80	0.65	0.49	0.89	0.83	0.68	0.51	0.91	0.85	0.70	0.52	0.94	0.88	0.72	0.54	0.98	0.92	0.75	0.56	0.98	0.92	0.75	0.56		
ΔT	24	23	20	16	24	23	20	16	24	23	20	16	24	23	20	16	24	23	20	16	22	21	19	15		
kW	3.93	4.02	4.14	4.27	4.23	4.32	4.46	4.61	4.50	4.59	4.74	4.90	4.73	4.83	4.99	5.16	4.93	5.04	5.20	5.38	5.10	5.21	5.38	5.57		
Amps	10.4	10.6	10.9	11.3	11.2	11.4	11.8	12.2	12.1	12.4	12.8	13.2	12.9	13.2	13.6	14.1	13.7	14.0	14.5	15.0	14.5	14.9	15.3	15.9		
Hi Pr	239	257	272	283	268	289	305	318	305	328	347	362	348	374	395	412	391	421	444	463	432	465	491	512		
Lo Pr	103	110	120	128	109	116	127	135	113	121	132	140	119	127	138	147	125	133	145	154	129	137	150	160		

85	2306	MBh	61.5	62.7	65.7	70.1	60.1	61.2	64.1	68.4	58.6	59.8	62.6	66.8	57.2	58.3	61.1	65.2	54.4	55.4	58.0	61.9	50.3	51.3	53.8	57.3
		S/T	0.98	0.94	0.85	0.69	1.00	0.98	0.88	0.72	1.00	1.00	0.90	0.73	1.00	1.00	0.93	0.76	1.00	1.00	0.97	0.79	1.00	1.00	0.98	0.79
	ΔT	24	24	22	19	24	24	23	20	23	23	23	20	23	23	23	20	22	22	22	19	20	20	21	18	
	kW	4.09	4.18	4.31	4.45	4.41	4.50	4.65	4.80	4.69	4.79	4.94	5.11	4.93	5.04	5.21	5.38	5.14	5.25	5.43	5.61	5.32	5.44	5.62	5.81	
	Amps	10.8	11.1	11.4	11.8	11.7	11.9	12.3	12.8	12.7	13.0	13.4	13.9	13.5	13.8	14.3	14.8	14.3	14.7	15.2	15.7	15.2	15.6	16.1	16.7	
	Hi Pr	251	271	286	298	282	304	321	334	321	345	365	380	365	393	415	433	411	442	467	487	454	489	516	538	
	Lo Pr	109	116	126	134	115	122	133	142	119	127	138	147	125	133	145	155	131	140	152	162	136	144	158	168	
	MBh	59.7	60.9	63.7	68.0	58.3	59.5	62.3	66.4	56.9	58.0	60.8	64.8	55.5	56.6	59.3	63.3	52.8	53.8	56.3	60.1	48.9	49.8	52.2	55.7	
	S/T	0.93	0.90	0.81	0.66	0.97	0.93	0.84	0.68	0.99	0.96	0.86	0.70	1.00	0.99	0.89	0.72	1.00	1.00	0.92	0.75	1.00	1.00	0.93	0.76	
	ΔT	25	25	23	20	25	25	24	20	25	25	24	20	25	25	24	21	24	24	23	20	22	22	22	19	
kW	4.06	4.15	4.28	4.42	4.37	4.47	4.61	4.76	4.65	4.75	4.90	5.07	4.89	5.00	5.16	5.33	5.10	5.21	5.38	5.56	5.27	5.39	5.57	5.76		
Amps	10.7	11.0	11.3	11.7	11.6	11.8	12.2	12.7	12.5	12.8	13.3	13.7	13.4	13.7	14.1	14.7	14.2	14.6	15.0	15.6	15.0	15.4	15.9	16.5		
Hi Pr	249	268	283	295	279	301	317	331	318	342	361	377	362	389	411	429	407	438	463	483	450	484	511	533		
Lo Pr	108	114	125	133	114	121	132	141	118	126	137	146	124	132	144	153	130	138	151	161	134	143	156	166		
MBh	55.1	56.2	58.8	62.8	53.8	54.9	57.5	61.3	52.6	53.6	56.1	59.9	51.3	52.3	54.7	58.4	48.7	49.6	52.0	55.5	45.1	46.0	48.2	51.4		
S/T	0.90	0.87	0.78	0.64	0.93	0.90	0.81	0.66	0.96	0.92	0.83	0.68	0.99	0.95	0.86	0.70	1.00	0.99	0.89	0.72	1.00	1.00	0.90	0.73		
ΔT	25	25	24	20	26	25	24	21	26	25	24	21	26	25	24	21	25	25	24	21	23	23	22	19		
kW	3.97	4.05	4.18	4.31	4.27	4.36	4.50	4.64	4.53	4.63	4.78	4.94	4.77	4.87	5.03	5.20	4.97	5.08	5.25	5.42	5.14	5.26	5.43	5.61		
Amps	10.4	10.7	11.0	11.4	11.3	11.5	11.9	12.3	12.2	12.5	12.9	13.4	13.0	13.3	13.8	14.3	13.8	14.2	14.6	15.2	14.6	15.0	15.5	16.1		
Hi Pr	242	260	274	286	271	292	308	321	308	332	350	365	351	378	399	416	395	425	449	468	436	470	496	517		
Lo Pr	104	111	121	129	110	117	128	136	115	122	133	142	120	128	140	149	126	134	146	156	130	139	151	161		

IDB: Entering Indoor Dry Bulb Temperature
 High and low pressures are measured at the liquid and suction service valves.
 Shaded area is ARI Rating Conditions
 Design Super Heat 9 ±3 °F @ Suction Service port, ARI 95 test conditions

DIMENSIONS

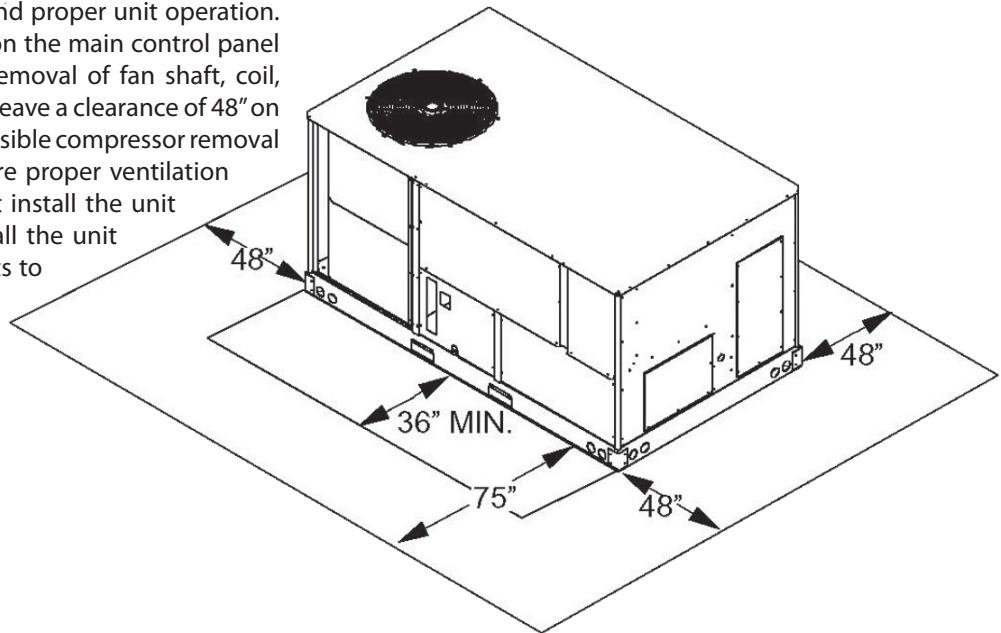


Point	Dimension (")
A	3½
B	2⅝
C	11
D	17
E	4¾
F	41½
G	3
H	12
I	75⅝
J	25
K	36⅜
L	40⅞
M	7 1/16

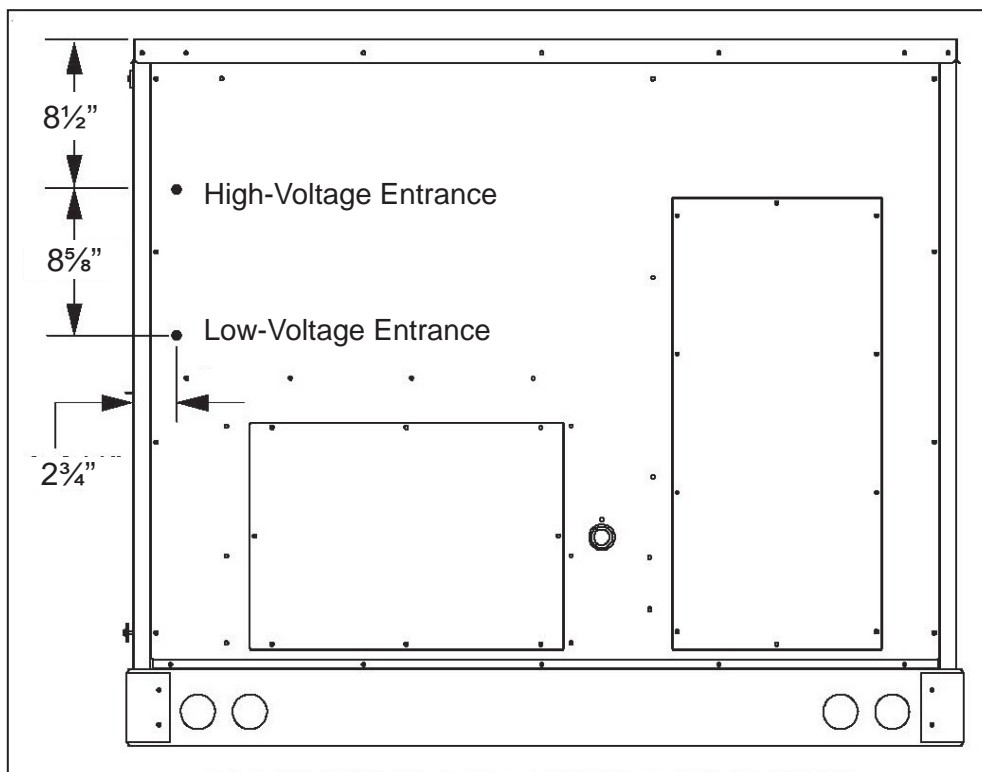
Point	Dimension (")
N	17
O	7⅞
P	11
Q	4⅞
R	1¼
S	25
T	4½
U	7½
V	12
W	4½
X	82¼
Y	81¼
Z	47⅞

UNIT CLEARANCES

Maintain an adequate clearance around the unit for safety, service, maintenance, and proper unit operation. Leave a total clearance of 75" on the main control panel side of the unit for possible removal of fan shaft, coil, electric heat, and gas furnace. Leave a clearance of 48" on all other sides of the unit for possible compressor removal or service access, and to ensure proper ventilation and condenser airflow. Do not install the unit beneath any obstruction. Install the unit away from all building exhausts to inhibit ingestion of exhaust air into the unit's fresh-air intake.



ELECTRICAL ENTRANCE LOCATIONS



ROOF CURB INSTALLATION — RIGGING

Provisions for forks have been included in the unit base frame. No other fork locations are approved.

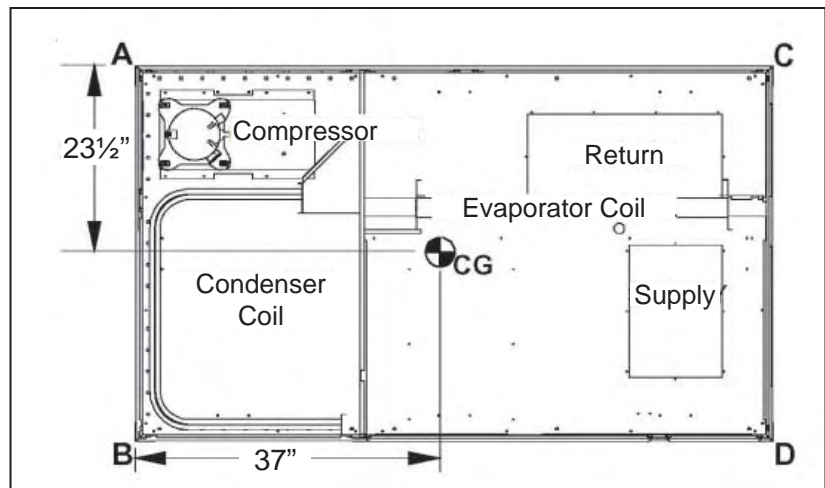
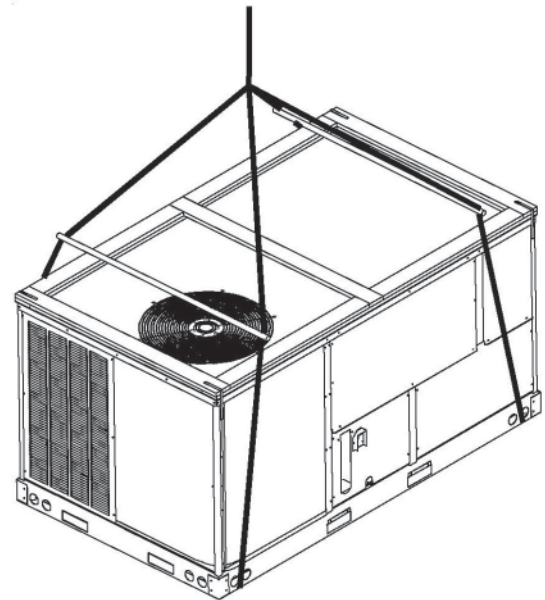
- Unit must be lifted by the four lifting holes located at the base frame corners.
- Lifting cables should be attached to the unit with shackles.
- The distance between the crane hook and the top of the unit must not be less than 60”.
- Two spreader bars must span over the unit to prevent damage to the cabinet by the lift cables. Spreader bars must be of sufficient length so that cables do not come in contact with the unit during transport. Remove wood struts mounted beneath unit base frame before setting unit on roof curb. These struts are intended to protect unit base frame from fork lift damage. To remove the struts, extract the sheet metal retainers and pull the struts through the base of the unit. Refer to rigging label on the unit.

Important: If using bottom discharge with roof curb, duct-work should be attached to the curb prior to installing the unit. Duct-work dimensions are shown in Roof Curb Installation Instructions Manual.

Refer to the Roof Curb Installation Instructions for proper curb installation. Curbing must be installed in compliance with the National Roofing Contractors Association Manual.

Lower unit carefully onto roof mounting curb. While rigging the unit, the center of gravity will cause the condenser end to be lower than the supply air end.

Bring condenser end of unit into alignment with the curb. With condenser end of the unit resting on curb member and using curb as a fulcrum, lower opposite end of the unit until entire unit is seated on the curb. When a rectangular cantilever curb is used, take care to center the unit. Check for proper alignment and orientation of supply and return openings with duct.



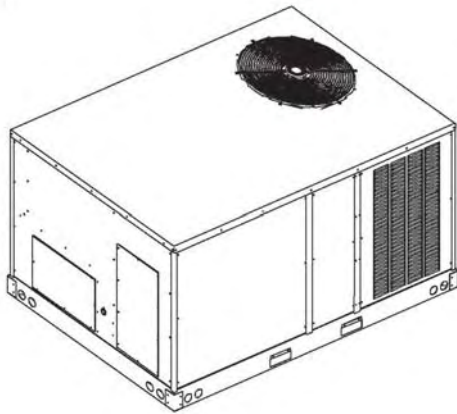
Corner & Center-of-Gravity Locations

To assist in determining rigging requirements, unit weights are shown to the right.

Note: These weights are calculated without accessories installed.

Unit Weights	3-Ton Weights (lbs)	4-Ton Weights (lbs)	5-Ton Weights (lbs)
Weight A	165	170	172
Weight B	160	164	163
Weight C	125	128	130
Weight D	120	123	123
Shipping Weight	590	605	610
Operating Weight	570	585	590

ROOF CURB INSTALLATION (CONT.)



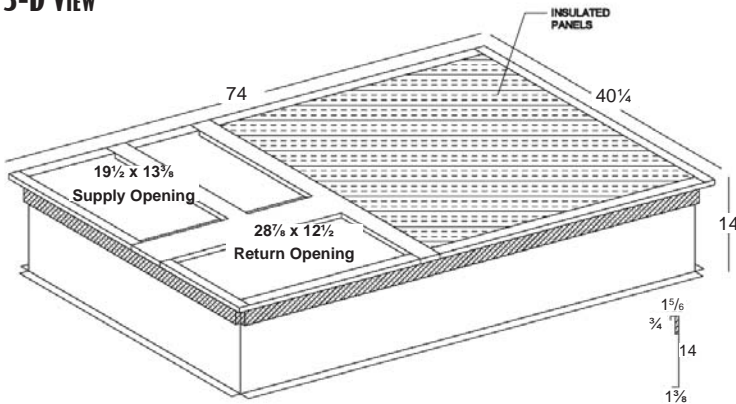
Curb installations must comply with local codes and should follow the established guidelines of the National Roofing Contractors Association.

Proper unit installation requires that the roof curb be firmly and permanently attached to the roof structure. Check for adequate fastening method prior to setting the unit on the curb.

Full perimeter roof curbs are available from the factory and are shipped unassembled. The installing contractor is responsible for field assembly, squaring, leveling, and mounting on the roof structure. All required hardware necessary for the assembly of the sheet metal curb is included in the curb accessory package.

- Determine sufficient structural support before locating and mounting the curb and package unit.
- Duct-work must be constructed using industry guidelines. The duct-work must be placed into the roof curb before mounting the package unit. Our full perimeter curbs include duct connection frames to be assembled with the curb. Cantilevered-type curbs are not available from the factory.

3-D VIEW

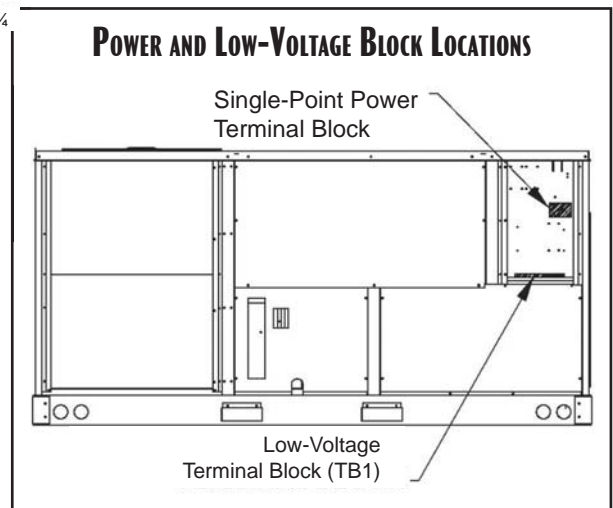
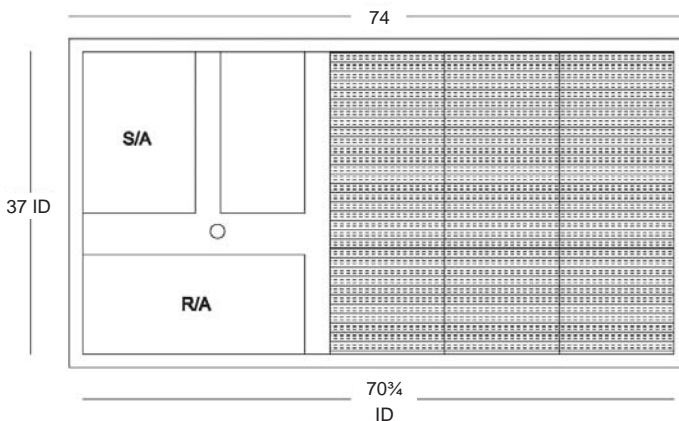


- Contractor furnishes curb insulation, cant strips, flashing, and general roofing material.
- Support curbs on parallel sides with roof members. To prevent damage to the unit, the roof members cannot penetrate supply and return duct openings.

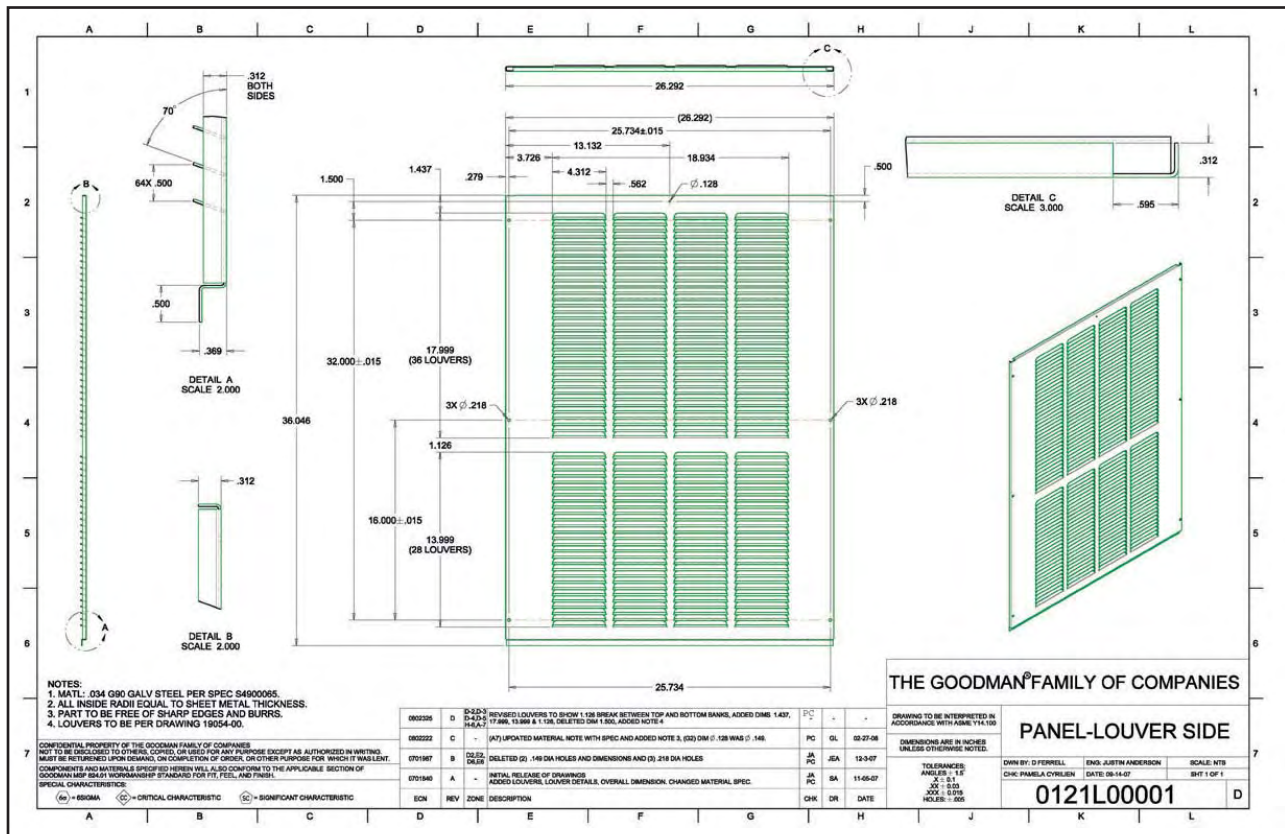
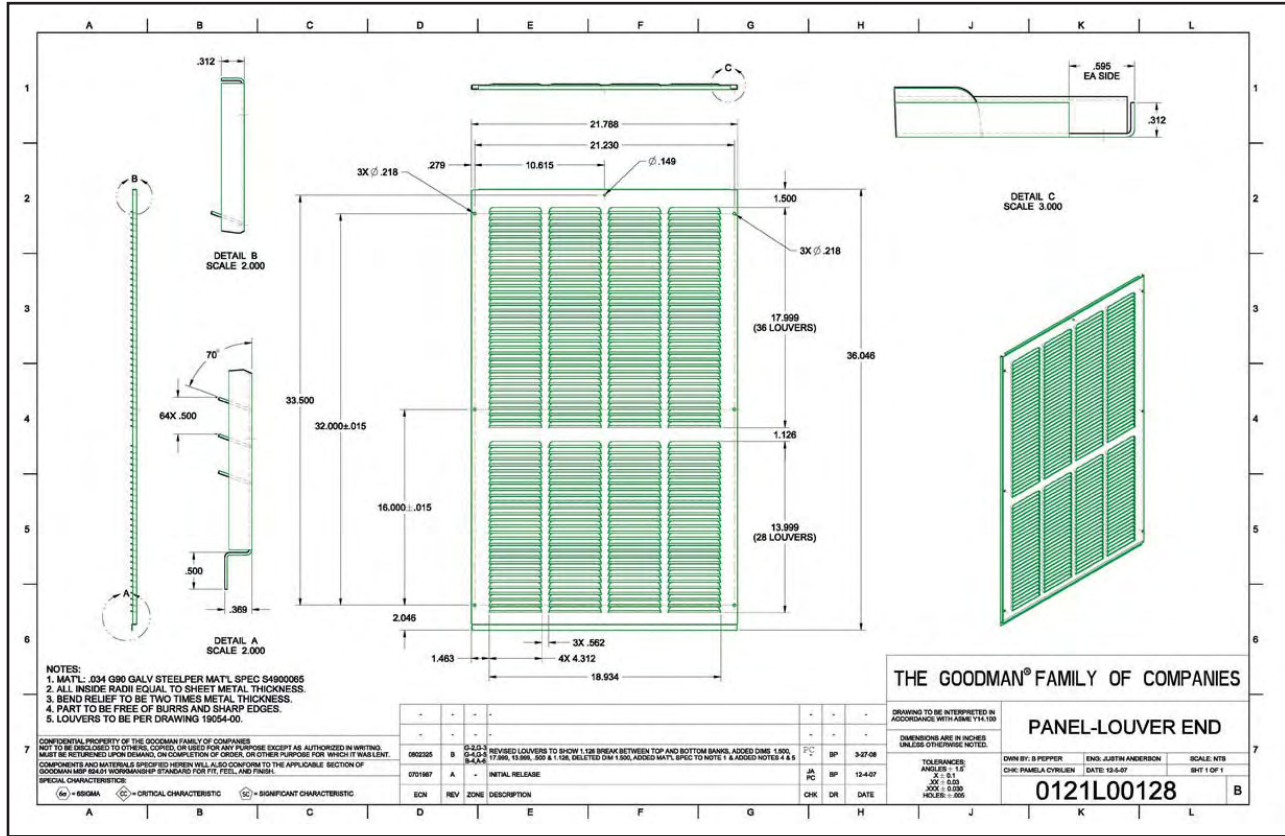
Note: The unit and curb accessories are designed to allow vertical duct installation before unit placement. Duct installation after unit placement is not recommended.

See the manual shipped with the roof curb for assembly and installation instructions.

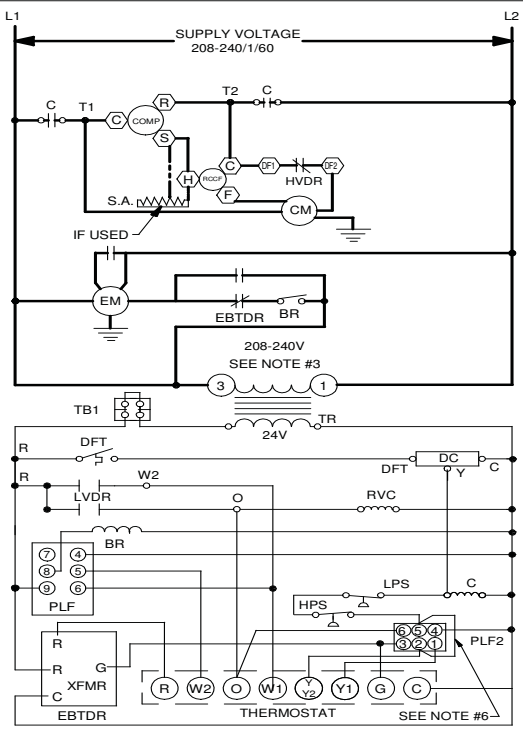
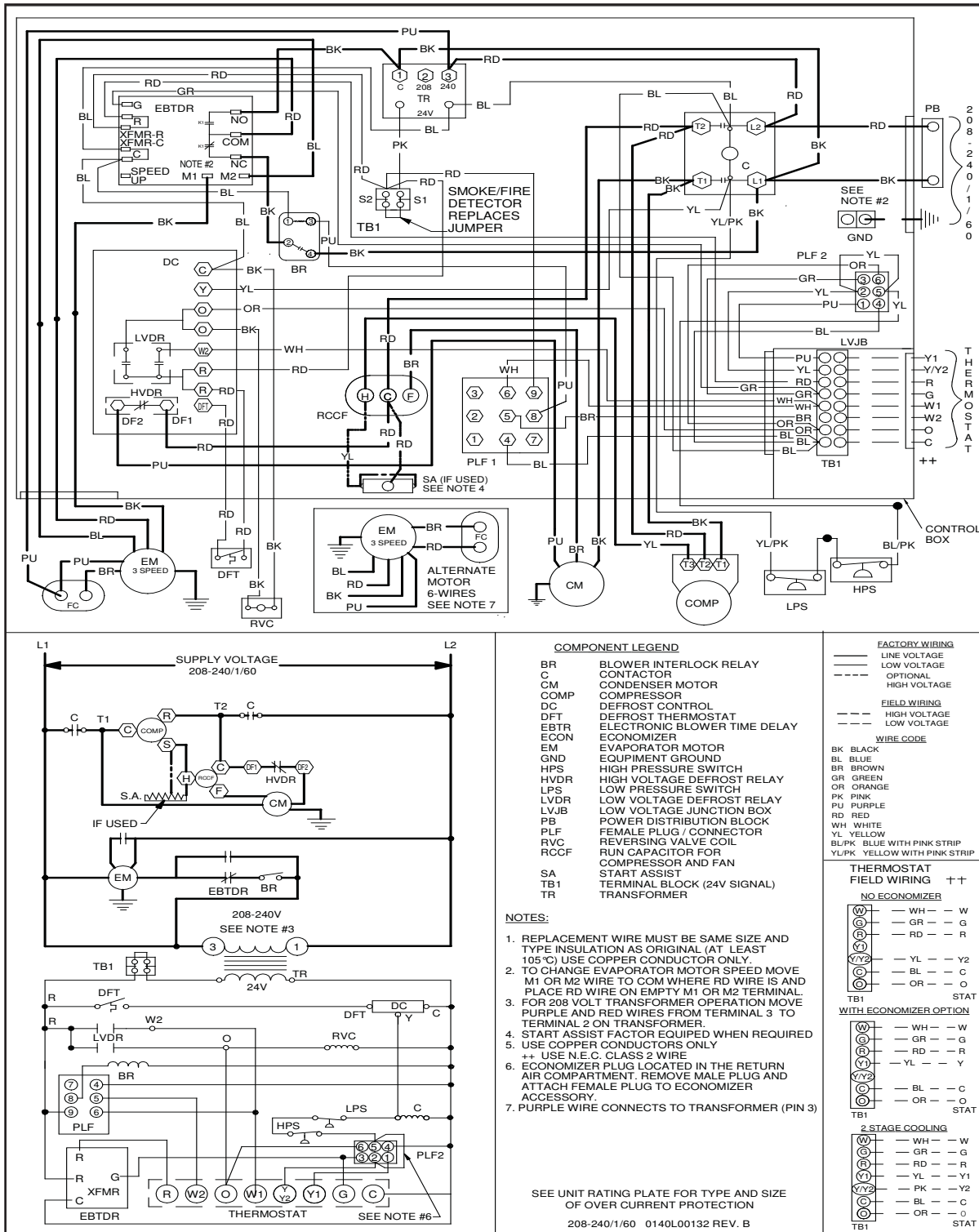
TOP VIEW



HAIL GUARD DIMENSIONS



WIRING DIAGRAM — CPH036/48**1D** (SINGLE-PHASE DIRECT DRIVE)



COMPONENT LEGEND

BR	BLOWER INTERLOCK RELAY CONTACTOR
CM	COMPRESSOR MOTOR
COMP	COMPRESSOR
DC	DEFROST CONTROL
DFT	DEFROST THERMOSTAT
ECON	ECONOMIZER
EM	EVAPORATOR MOTOR
GND	EQUIPMENT GROUND
HPS	HIGH PRESSURE SWITCH
HVDR	HIGH VOLTAGE DEFROST RELAY
LPS	LOW PRESSURE SWITCH
LVDR	LOW VOLTAGE DEFROST RELAY
LVJB	LOW VOLTAGE JUNCTION BOX
PB	POWER DISTRIBUTION BLOCK
PLF	FEMALE PLUG / CONNECTOR
RVC	REVERSING VALVE COIL
RCCF	COMPRESSOR AND FAN
SA	START ASSIST
TB1	TERMINAL BLOCK (24V SIGNAL)
TR	TRANSFORMER

- NOTES:**
- REPLACEMENT WIRE MUST BE SAME SIZE AND TYPE INSULATION AS ORIGINAL (AT LEAST 105°C) USE COPPER CONDUCTOR ONLY.
 - TO CHANGE EVAPORATOR MOTOR SPEED MOVE M1 OR M2 WIRE TO COM WHERE RD WIRE IS AND PLACE RD WIRE ON EMPTY M1 OR M2 TERMINAL.
 - FOR 208 VOLT TRANSFORMER OPERATION MOVE PURPLE AND RED WIRES FROM TERMINAL 3 TO TERMINAL 2 ON TRANSFORMER
 - START ASSIST FACTOR EQUIPPED WHEN REQUIRED
 - USE COPPER CONDUCTORS ONLY
++ USE N.E.C. CLASS 2 WIRE
 - ECONOMIZER PLUG LOCATED IN THE RETURN AIR COMPARTMENT. REMOVE MALE PLUG AND ATTACH FEMALE PLUG TO ECONOMIZER ACCESSORY.
 - PURPLE WIRE CONNECTS TO TRANSFORMER (PIN 3)

SEE UNIT RATING PLATE FOR TYPE AND SIZE OF OVER CURRENT PROTECTION
208-240/1/60 0140L00132 REV. B

FACTORY WIRING

— LINE VOLTAGE
— LOW VOLTAGE
- - - OPTIONAL HIGH VOLTAGE

FIELD WIRING

— HIGH VOLTAGE
- - - LOW VOLTAGE

WIRE CODE

BK BLACK
BL BLUE
BR BROWN
GR GREEN
OR ORANGE
PK PINK
PU PURPLE
RD RED
WH WHITE
YL YELLOW
BL/PK BLUE WITH PINK STRIP
YL/PK YELLOW WITH PINK STRIP

THERMOSTAT FIELD WIRING ++

NO ECONOMIZER

W1	—	WH	—	W
W2	—	GR	—	G
Y1	—	RD	—	R
Y2	—	YL	—	Y2
O	—	BL	—	C
C	—	OR	—	O
TB1				STAT

WITH ECONOMIZER OPTION

W1	—	WH	—	W
W2	—	GR	—	G
Y1	—	RD	—	R
Y2	—	YL	—	Y
O	—	BL	—	C
C	—	OR	—	O
TB1				STAT

2 STAGE COOLING

W1	—	WH	—	W
W2	—	GR	—	G
Y1	—	RD	—	R
Y2	—	YL	—	Y1
O	—	PK	—	Y2
C	—	BL	—	C
TB1		OR	—	O
TB1				STAT

Wiring is subject to change. Always refer to the wiring diagram on the unit for the most up-to-date wiring.

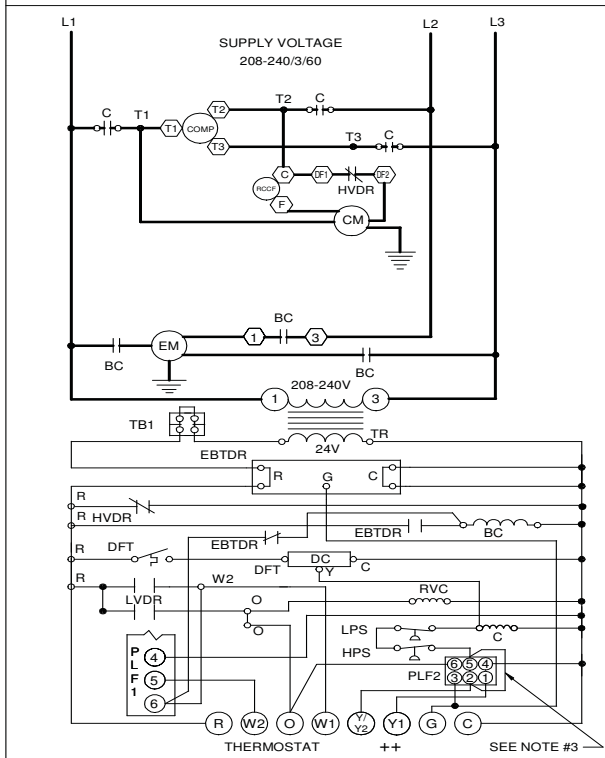
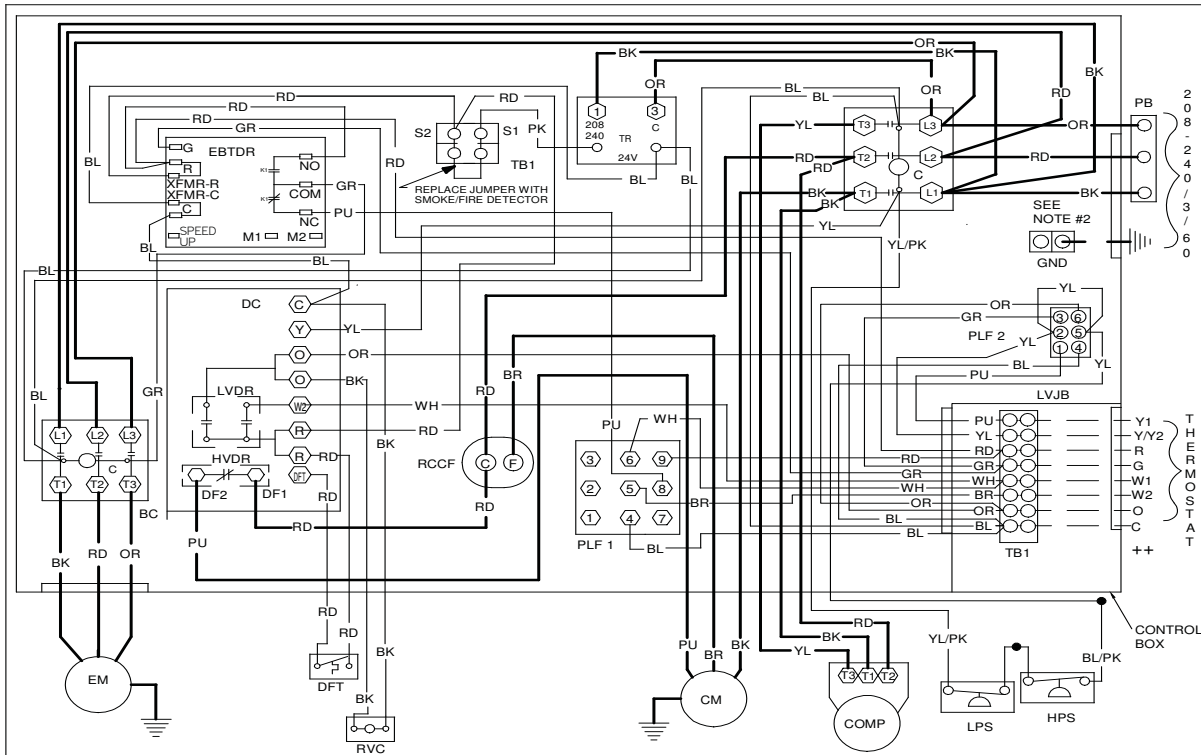


WARNING

High Voltage:
Disconnect all power before servicing or installing this unit. Multiple power sources may be present. Failure to do so may cause property damage, personal injury, or death.



WIRING DIAGRAM — CPH36/48/60**3B*** (THREE PHASE, BELT DRIVE)



COMPONENT LEGEND

BC BLOWER CONTACTOR
 C CONTACTOR
 CM CONDENSER MOTOR
 COMP COMPRESSOR
 DC DEFROST CONTROL
 DFT DEFROST THERMOSTAT
 ECON ECONOMIZER
 EBTDR ELECTRONIC BLOWER TIME DELAY
 EMR EVAPORATOR MOTOR RELAY
 R RELAY
 EM EVAPORATOR MOTOR
 FC FAN CAPACITOR
 GND EQUIPMENT GROUND
 HPS HIGH PRESSURE SWITCH
 HVDR HIGH VOLTAGE DEFROST RELAY
 LPS LOW PRESSURE SWITCH
 LVDR LOW VOLTAGE DEFROST RELAY
 LVJB LOW VOLTAGE JUNCTION BOX
 PB POWER DISTRIBUTION BLOCK
 PLF FEMALE PLUG / CONNECTOR
 RVC REVERSING VALVE COIL
 RCCF RUN CAPACITOR FOR CONDENSER FAN
 TB1 TERMINAL BLOCK (24V SIGNAL) TRANSFORMER

NOTES:

- REPLACEMENT WIRE MUST BE SAME SIZE AND TYPE INSULATION AS ORIGINAL (AT LEAST 105°C) USE COPPER CONDUCTORS ONLY.
- USE COPPER CONDUCTORS ONLY ++ USE N.E.C. CLASS 2 WIRE
- ECONOMIZER PLUG LOCATED IN THE RETURN AIR COMPARTMENT. REMOVE MALE PLUG AND ATTACH FEMALE PLUG TO THE ECONOMIZER ACCESSORY.

SEE UNIT RATING PLATE FOR TYPE AND SIZE OF OVER CURRENT PROTECTION
 208-240/3/60 0140L00064 REV. C

FACTORY WIRING
 — LINE VOLTAGE
 - - - LOW VOLTAGE
 - - - - OPTIONAL HIGH VOLTAGE

FIELD WIRING
 - - - HIGH VOLTAGE
 - - - - LOW VOLTAGE

WIRE CODE
 BK BLACK
 BL BLUE
 BR BROWN
 GR GREEN
 OR ORANGE
 PK PINK
 PU PURPLE
 RD RED
 WH WHITE
 YL YELLOW
 BL/PK BLUE WITH PINK STRIP
 YL/PK YELLOW WITH PINK STRIP

THERMOSTAT FIELD WIRING ++

NO ECONOMIZER

W	—	WH	—	W
C	—	GR	—	C
F	—	RD	—	R
T1	—	YL	—	Y
T2	—	BL	—	C
T3	—	OR	—	O

TB1 STAT

WITH ECONOMIZER OPTION

W	—	WH	—	W
C	—	GR	—	C
F	—	RD	—	R
T1	—	YL	—	Y
T2	—	BL	—	C
T3	—	OR	—	O

TB1 STAT

2 STAGE COOLING

W	—	WH	—	W
C	—	GR	—	C
F	—	RD	—	R
T1	—	YL	—	Y1
T2	—	PK	—	Y2
T3	—	BL	—	C
T4	—	OR	—	O

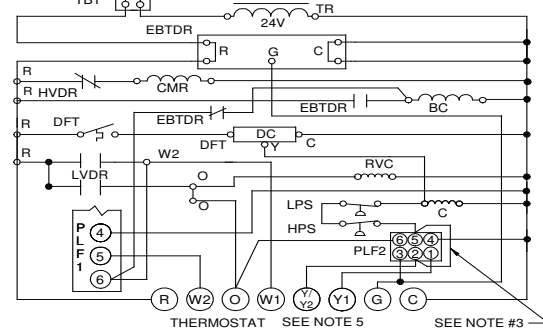
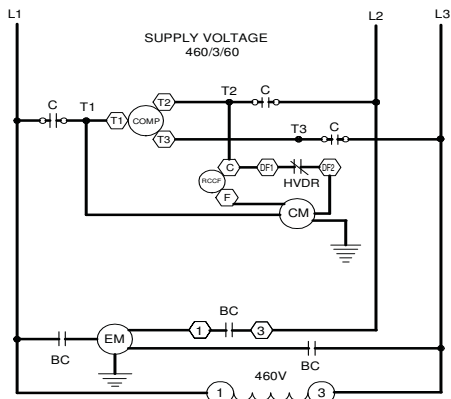
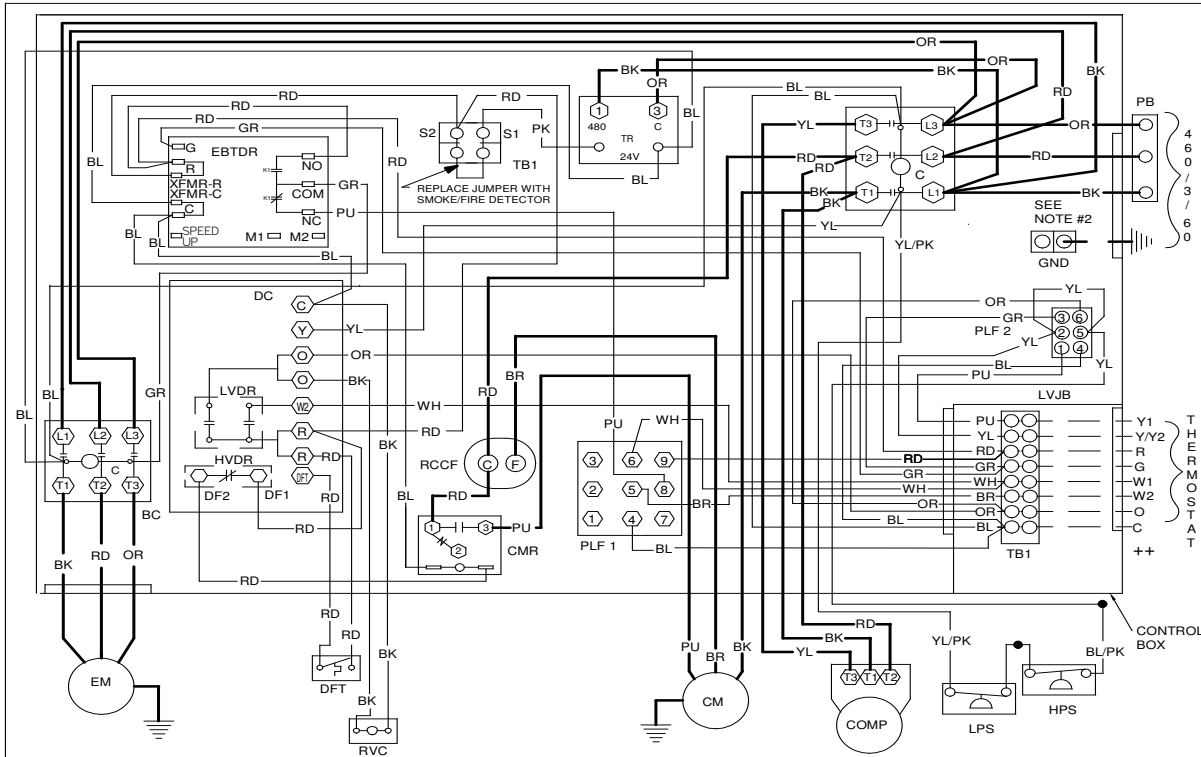
TB1 STAT

Wiring is subject to change. Always refer to the wiring diagram on the unit for the most up-to-date wiring.

WARNING

High Voltage:
 Disconnect all power before servicing or installing this unit. Multiple power sources may be present. Failure to do so may cause property damage, personal injury, or death.

WIRING DIAGRAM — CPH36/48/60**4B (460V BELT DRIVE)



COMPONENT LEGEND

- BC BLOWER CONTACTOR
- C CONTACTOR
- CM CONDENSER MOTOR
- CMR CONDENSER MOTOR RELAY
- COMP COMPRESSOR
- DC DEFROST CONTROL
- DFT DEFROST THERMOSTAT
- ECOM ECONOMIZER
- ECON ELECTRONIC BLOWER TIME DELAY
- EMR EVAPORATOR MOTOR RELAY
- R RELAY
- EM EVAPORATOR MOTOR
- FC FAN CAPACITOR
- GND EQUIPMENT GROUND
- HPS HIGH PRESSURE SWITCH
- HVDR HIGH VOLTAGE DEFROST RELAY
- LPS LOW PRESSURE SWITCH
- LVDR LOW VOLTAGE DEFROST RELAY
- LVJB LOW VOLTAGE JUNCTION BOX
- PB POWER DISTRIBUTION BLOCK
- PLF FEMALE PLUG / CONNECTOR
- RVC REVERSING VALVE COIL
- RCCF RUN CAPACITOR FOR CONDENSER FAN
- TB1 TERMINAL BLOCK (24V SIGNAL)
- TR TRANSFORMER

NOTES:

1. REPLACEMENT WIRE MUST BE SAME SIZE AND TYPE INSULATION AS ORIGINAL (AT LEAST 105°C) USE COPPER CONDUCTOR ONLY.
2. USE COPPER CONDUCTORS ONLY
3. ECONOMIZER PLUG LOCATED IN THE RETURN AIR COMPARTMENT. REMOVE MALE PLUG AND ATTACH FEMALE PLUG TO THE ECONOMIZER ACCESSORY.

SEE UNIT RATING PLATE FOR TYPE AND SIZE OF OVER CURRENT PROTECTION
460/3/60 0140L00017 REV. C

FACTORY WIRING
 — LINE VOLTAGE
 - - - LOW VOLTAGE
 - - - - - OPTIONAL HIGH VOLTAGE

FIELD WIRING
 - - - - - HIGH VOLTAGE
 - - - - - LOW VOLTAGE

WIRE CODE
 BK BLACK
 BL BLUE
 BR BROWN
 GR GREEN
 OR ORANGE
 PK PINK
 PU PURPLE
 RD RED
 WH WHITE
 YL YELLOW
 BL/PK BLUE WITH PINK STRIP
 YL/PK YELLOW WITH PINK STRIP

THERMOSTAT FIELD WIRING ++

NO ECONOMIZER

W1	— WH —	W
W2	— GR —	G
Y1	— RD —	R
Y2	— YL —	Y
C	— BL —	C
O	— OR —	O
STAT	— —	STAT

WITH ECONOMIZER OPTION

W1	— WH —	W
W2	— GR —	G
Y1	— RD —	R
Y2	— YL —	Y
C	— BL —	C
O	— OR —	O
STAT	— —	STAT

2 STAGE COOLING

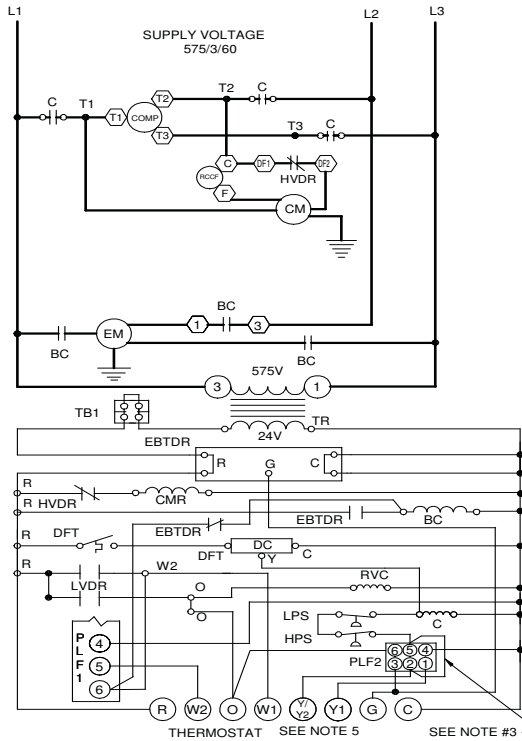
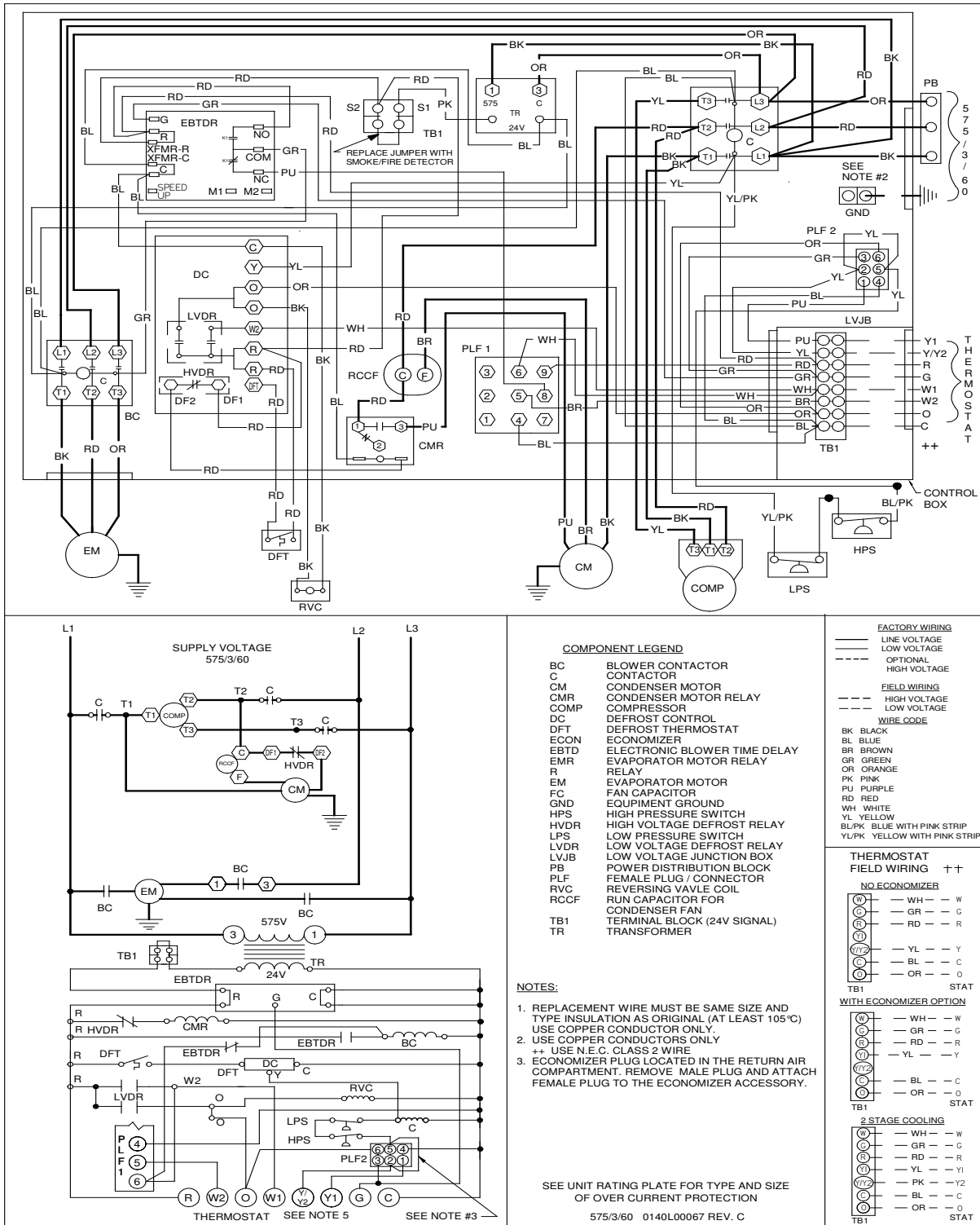
W1	— WH —	W
W2	— GR —	G
Y1	— RD —	R
Y2	— YL —	Y
C	— BL —	C
O	— OR —	O
STAT	— —	STAT

Wiring is subject to change. Always refer to the wiring diagram on the unit for the most up-to-date wiring.

WARNING

High Voltage:
 Disconnect all power before servicing or installing this unit. Multiple power sources may be present. Failure to do so may cause property damage, personal injury, or death.

WIRING DIAGRAM — CPH36/48/60***7B*** (575V, BELT DRIVE)



COMPONENT LEGEND

BC	BLOWER CONTACTOR
C	CONTACTOR
CM	CONDENSER MOTOR
CMR	CONDENSER MOTOR RELAY
COMP	COMPRESSOR
DC	DEFROST CONTROL
DFT	DEFROST THERMOSTAT
ECON	ECONOMIZER
EBTD	ELECTRONIC BLOWER TIME DELAY
EMR	EVAPORATOR MOTOR RELAY
EM	EVAPORATOR MOTOR
FC	FAN CAPACITOR
GND	EQUIPMENT GROUND
HPS	HIGH PRESSURE SWITCH
HVDR	HIGH VOLTAGE DEFROST RELAY
LPS	LOW PRESSURE SWITCH
LVDR	LOW VOLTAGE DEFROST RELAY
LVJB	LOW VOLTAGE JUNCTION BOX
PB	POWER DISTRIBUTION BLOCK
PLF	FEMALE PLUG / CONNECTOR
RVC	REVERSING VALVE COIL
RCCF	RUN CAPACITOR FOR CONDENSER FAN
TB1	TERMINAL BLOCK (24V SIGNAL)
TR	TRANSFORMER

- NOTES:**
1. REPLACEMENT WIRE MUST BE SAME SIZE AND TYPE INSULATION AS ORIGINAL (AT LEAST 105°C) USE COPPER CONDUCTOR ONLY.
 2. USE COPPER CONDUCTORS ONLY
 3. ++ USE N.E.C. CLASS 2 WIRE
- ECONOMIZER PLUG LOCATED IN THE RETURN AIR COMPARTMENT. REMOVE MALE PLUG AND ATTACH FEMALE PLUG TO THE ECONOMIZER ACCESSORY.
- SEE UNIT RATING PLATE FOR TYPE AND SIZE OF OVER CURRENT PROTECTION
- 575/3/60 0140L00067 REV. C

FACTORY WIRING

— LINE VOLTAGE
 --- LOW VOLTAGE
 - - - - - OPTIONAL HIGH VOLTAGE

FIELD WIRING

--- HIGH VOLTAGE
 - - - - - LOW VOLTAGE

WIRE CODE

BK BLACK
 BL BLUE
 BR BROWN
 GR GREEN
 OR ORANGE
 PK PINK
 PU PURPLE
 RD RED
 WH WHITE
 YL YELLOW
 BL/PK BLUE WITH PINK STRIP
 YL/PK YELLOW WITH PINK STRIP

THERMOSTAT FIELD WIRING ++

NO ECONOMIZER

(W)	— WH — W
(C)	— GR — G
(R)	— RD — R
(Y1)	— YL — Y
(Y2)	— BL — C
(O)	— OR — O

TB1 STAT

WITH ECONOMIZER OPTION

(W)	— WH — W
(C)	— GR — G
(R)	— RD — R
(Y1)	— YL — Y
(Y2)	— PK — Y2
(O)	— BL — C
(O)	— OR — O

TB1 STAT

2 STAGE COOLING

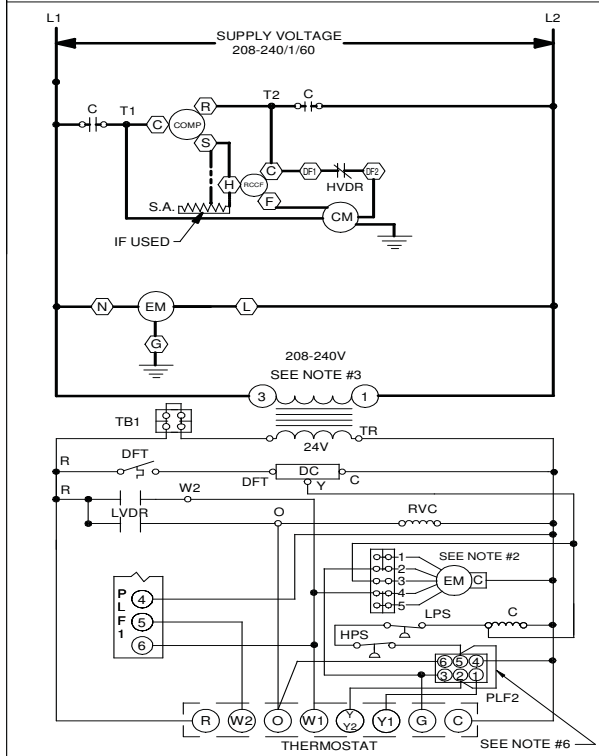
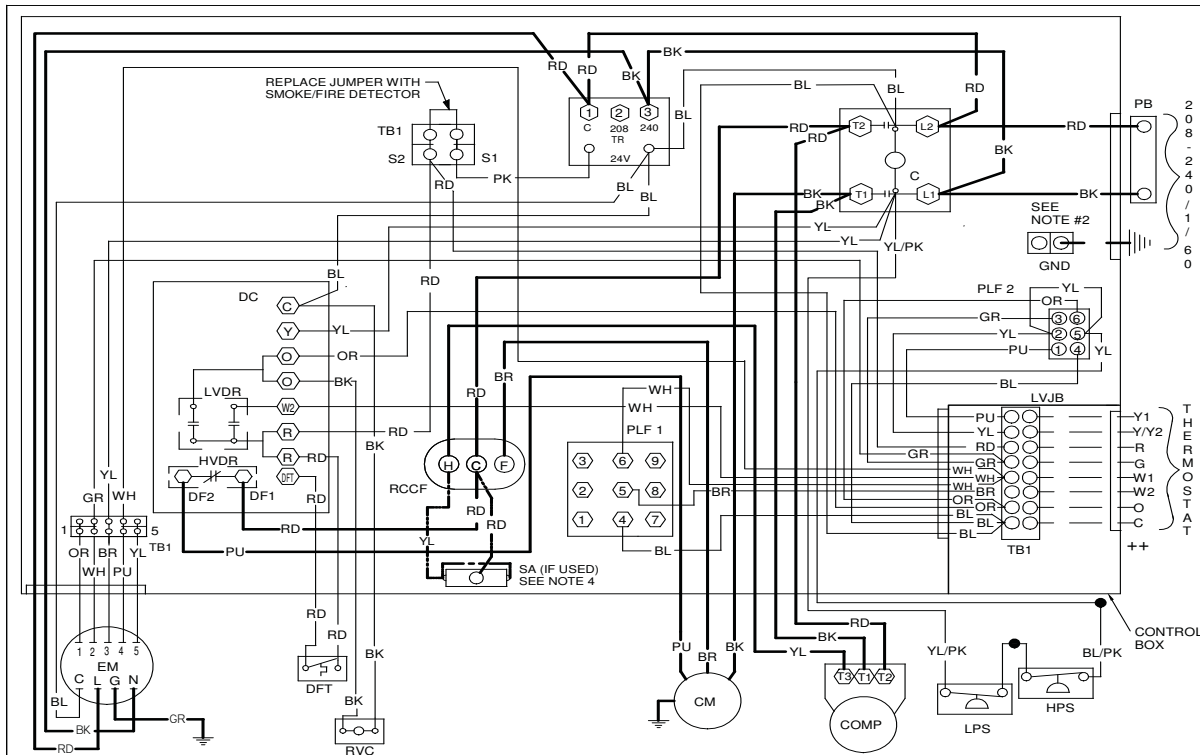
(W)	— WH — W
(C)	— GR — G
(R)	— RD — R
(Y1)	— YL — Y1
(Y2)	— PK — Y2
(O)	— BL — C
(O)	— OR — O

TB1 STAT

Wiring is subject to change. Always refer to the wiring diagram on the unit for the most up-to-date wiring.

<p>WARNING</p>	<p>High Voltage: Disconnect all power before servicing or installing this unit. Multiple power sources may be present. Failure to do so may cause property damage, personal injury, or death.</p>	
-----------------------	---	--

WIRING DIAGRAM — CPH060***1D*** (SINGLE-PHASE, DIRECT DRIVE)



COMPONENT LEGEND

C	CONTACTOR
CM	CONDENSER MOTOR
COMP	COMPRESSOR
DC	DEFROST CONTROL
DFT	DEFROST THERMOSTAT
ECON	ECONOMIZER
EM	EVAPORATOR MOTOR
GND	EQUIPMENT GROUND
HPS	HIGH PRESSURE SWITCH
HVDR	HIGH VOLTAGE DEFROST RELAY
LPS	LOW PRESSURE SWITCH
LVDR	LOW VOLTAGE DEFROST RELAY
LVJB	LOW VOLTAGE JUNCTION BOX
PLF	FEMALE PLUG / CONNECTOR
RVC	REVERSING VALVE COIL
RDCF	RUN CAPACITOR FOR COMPRESSOR AND FAN
SA	START ASSIST
TB1	TERMINAL BLOCK (24V SIGNAL) TRANSFORMER

- NOTES:**
- REPLACEMENT WIRE MUST BE SAME SIZE AND TYPE INSULATION AS ORIGINAL (AT LEAST 105°C) USE COPPER CONDUCTOR ONLY.
 - TO CHANGE EVAPORATOR MOTOR SPEED MOVE WHITE AND YELLOW LEADS FROM "3" AND "4" TO "4" AND "5". IF BOTH LEADS ARE ENERGIZED, THE HIGHER SPEED SETTING IS USED.
 - FOR 208 VOLT TRANSFORMER OPERATION MOVE BLACK WIRES FROM TERMINAL 3 TO TERMINAL 2 ON TRANSFORMER.
 - START ASSIST FACTOR EQUIPED WHEN REQUIRED
 - USE COPPER CONDUCTORS ONLY
 - ECONOMIZER PLUG LOCATED IN THE RETURN AIR COMPARTMENT. REMOVE MALE PLUG AND ATTACH FEMALE PLUG TO ECONOMIZER ACCESSORY.
- SEE UNIT RATING PLATE FOR TYPE AND SIZE OF OVER CURRENT PROTECTION
- 208-240/1/60 0140L00016 REV. C

FACTORY WIRING

— LINE VOLTAGE
 --- LOW VOLTAGE
 - - - - - OPTIONAL HIGH VOLTAGE

FIELD WIRING

--- HIGH VOLTAGE
 - - - - - LOW VOLTAGE

WIRE CODE

BK BLACK
 BL BLUE
 BR BROWN
 GR GREEN
 OR ORANGE
 PK PINK
 PU PURPLE
 RD RED
 WH WHITE
 YL YELLOW
 BL/PK BLUE WITH PINK STRIP
 YL/PK YELLOW WITH PINK STRIP

THERMOSTAT FIELD WIRING ++

NO ECONOMIZER

①	— WH —	W
②	— GR —	G
③	— RD —	R
④	— YL —	Y
⑤	— BL —	C
⑥	— OR —	O

TB1 START

WITH ECONOMIZER OPTION

①	— WH —	W
②	— GR —	G
③	— RD —	R
④	— YL —	Y
⑤	— BL —	C
⑥	— OR —	O

TB1 START

2 STAGE COOLING

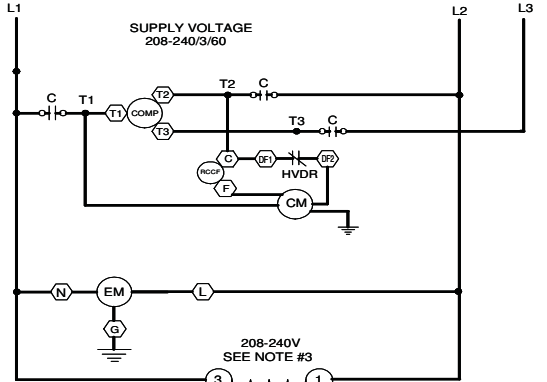
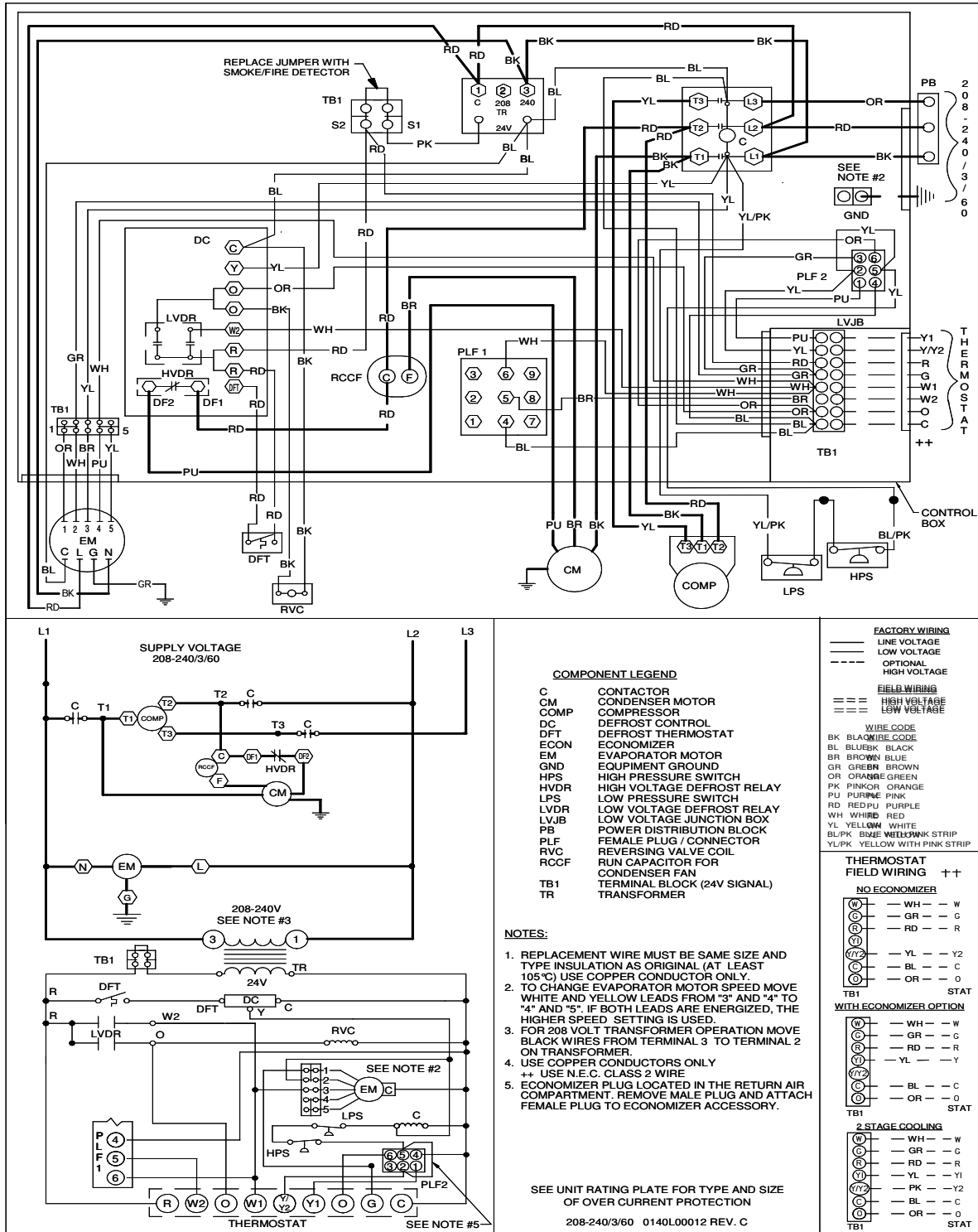
①	— WH —	W
②	— GR —	G
③	— RD —	R
④	— YL —	Y1
⑤	— YL —	Y2
⑥	— BL —	C
⑦	— OR —	O

TB1 START

Wiring is subject to change. Always refer to the wiring diagram on the unit for the most up-to-date wiring.

<p>WARNING</p>	<p>High Voltage: Disconnect all power before servicing or installing this unit. Multiple power sources may be present. Failure to do so may cause property damage, personal injury, or death.</p>	
-----------------------	---	--

WIRING DIAGRAM — CPH060***3D*** (3-PHASE, DIRECT DRIVE)



COMPONENT LEGEND

C	CONTACTOR
CM	CONDENSER MOTOR
COMP	COMPRESSOR
DC	DEFROST CONTROL
DFT	DEFROST THERMOSTAT
ECON	ECONOMIZER
EM	EVAPORATOR MOTOR
EM	EQUIPMENT GROUND
HPS	HIGH PRESSURE SWITCH
HVDR	HIGH VOLTAGE DEFROST RELAY
LPS	LOW PRESSURE SWITCH
LVDR	LOW VOLTAGE DEFROST RELAY
LVJB	LOW VOLTAGE JUNCTION BOX
PLF	FEMALE PLUG / CONNECTOR
RVC	REVERSING VALVE COIL
RCCF	RUN CAPACITOR FOR CONDENSER FAN
TB1	TERMINAL BLOCK (24V SIGNAL)
TR	TRANSFORMER

- NOTES:**
- REPLACEMENT WIRE MUST BE SAME SIZE AND TYPE INSULATION AS ORIGINAL (AT LEAST 105°C) USE COPPER CONDUCTOR ONLY.
 - TO CHANGE EVAPORATOR MOTOR SPEED MOVE WHITE AND YELLOW LEADS FROM "3" AND "4" TO "4" AND "5". IF BOTH LEADS ARE ENERGIZED, THE HIGHER SPEED SETTING IS USED.
 - FOR 208 VOLT TRANSFORMER OPERATION MOVE BLACK WIRES FROM TERMINAL 3 TO TERMINAL 2 ON TRANSFORMER.
 - USE COPPER CONDUCTORS ONLY
++ USE N.E.C. CLASS 2 WIRE
 - ECONOMIZER PLUG LOCATED IN THE RETURN AIR COMPARTMENT. REMOVE MALE PLUG AND ATTACH FEMALE PLUG TO ECONOMIZER ACCESSORY.
- SEE UNIT RATING PLATE FOR TYPE AND SIZE OF OVER CURRENT PROTECTION
- 208-240/3/60 0140L00012 REV. C

FACTORY WIRING

— LINE VOLTAGE
— LOW VOLTAGE
- - - OPTIONAL
- - - HIGH VOLTAGE

FIELD WIRING

== HIGH VOLTAGE
== LOW VOLTAGE

WIRE CODE

BK BLACK/BLACK CODE
BL BLUE/BLACK
BR BROWN/BLUE
GR GREEN/BROWN
OR ORANGE/GREEN
PK PINK/ORANGE
PU PURPLE/PINK
RD RED/PURPLE
WH WHITE/PURPLE
YL YELLOW/WHITE
BL/PK BLUE WITH PINK STRIP
YL/PK YELLOW WITH PINK STRIP

THERMOSTAT FIELD WIRING ++

NO ECONOMIZER

(W)	— WH —	W
(G)	— GR —	G
(R)	— RD —	R
(Y)	— YL —	Y2
(C)	— BL —	C
(O)	— OR —	O

TB1 **STAT**

WITH ECONOMIZER OPTION

(W)	— WH —	W
(G)	— GR —	G
(R)	— RD —	R
(Y)	— YL —	Y
(C)	— BL —	C
(O)	— OR —	O

TB1 **STAT**

2 STAGE COOLING

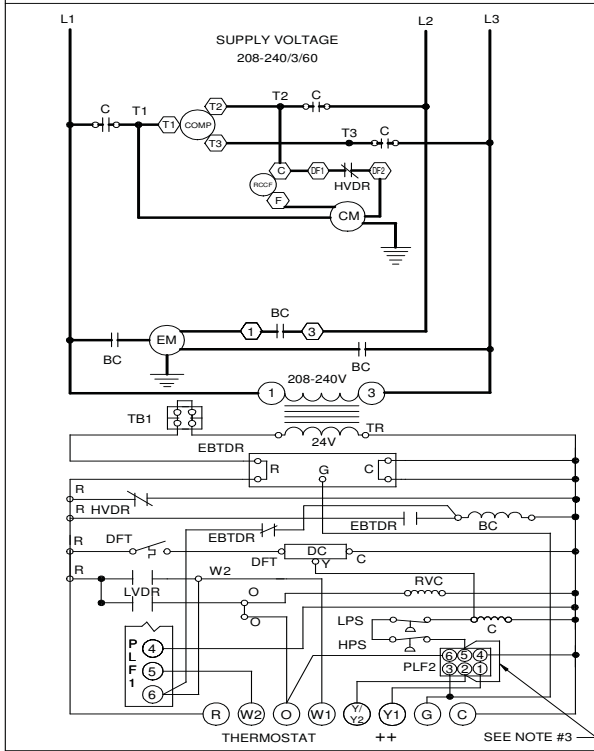
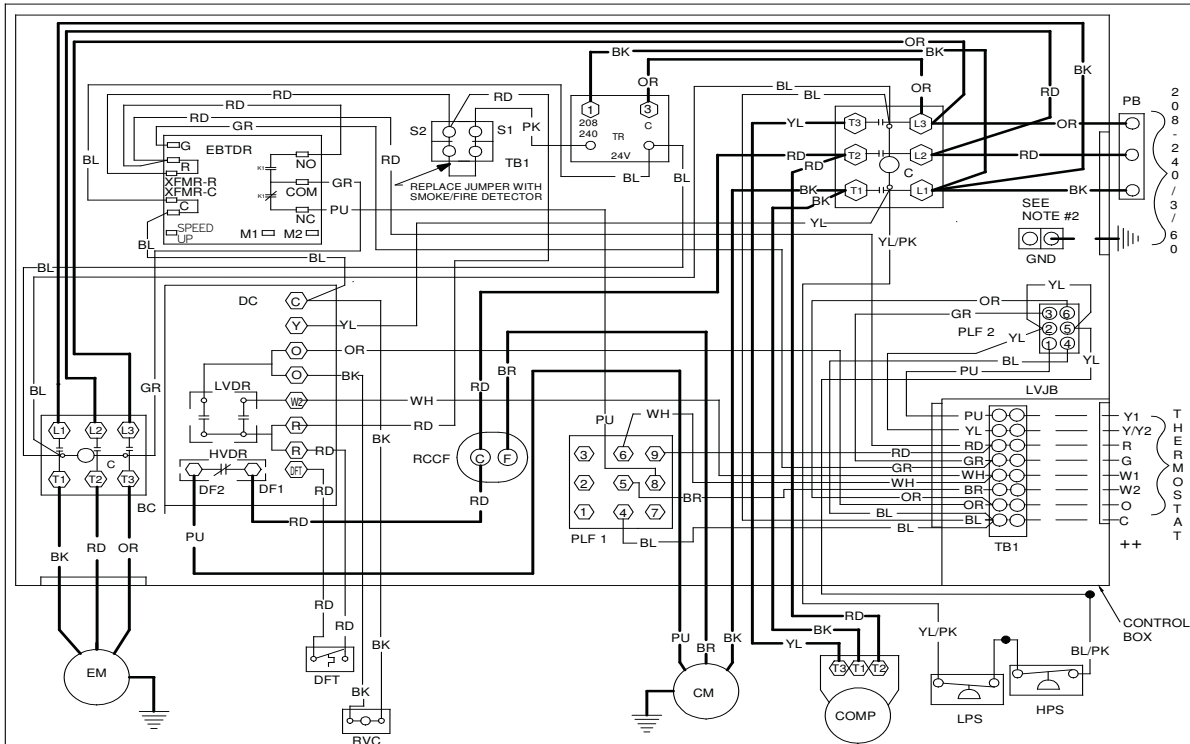
(W)	— WH —	W
(G)	— GR —	G
(R)	— RD —	R
(Y)	— YL —	Y1
(Y)	— YL —	Y2
(C)	— BL —	C
(O)	— OR —	O

TB1 **STAT**

Wiring is subject to change. Always refer to the wiring diagram on the unit for the most up-to-date wiring.

<p>WARNING</p>	<p>High Voltage: Disconnect all power before servicing or installing this unit. Multiple power sources may be present. Failure to do so may cause property damage, personal injury, or death.</p>	
-----------------------	--	--

WIRING DIAGRAM — CPH60***3B*** (THREE PHASE, BELT DRIVE)



COMPONENT LEGEND

- BC BLOWER CONTACTOR
- C CONTACTOR
- CM CONDENSER MOTOR
- COMP COMPRESSOR
- DC DEFROST CONTROL
- DFT DEFROST THERMOSTAT
- ECON ECONOMIZER
- EBTD ELECTRONIC BLOWER TIME DELAY
- EMR EVAPORATOR MOTOR RELAY
- EM EVAPORATOR MOTOR
- FC FAN CAPACITOR
- GND EQUIPMENT GROUND
- HPS HIGH PRESSURE SWITCH
- HVDR HIGH VOLTAGE DEFROST RELAY
- LPS LOW PRESSURE SWITCH
- LVDR LOW VOLTAGE DEFROST RELAY
- LVJB LOW VOLTAGE JUNCTION BOX
- PB POWER DISTRIBUTION BLOCK
- PLF FEMALE PLUG / CONNECTOR
- RVC REVERSING VALVE COIL
- RCCF RUN CAPACITOR FOR CONDENSER FAN
- TB1 TERMINAL BLOCK (24V SIGNAL)
- TR TRANSFORMER

NOTES:

1. REPLACEMENT WIRE MUST BE SAME SIZE AND TYPE INSULATION AS ORIGINAL (AT LEAST 105°C) USE COPPER CONDUCTOR ONLY.
2. USE COPPER CONDUCTORS ONLY
3. ECONOMIZER PLUG LOCATED IN THE RETURN AIR COMPARTMENT. REMOVE MALE PLUG AND ATTACH FEMALE PLUG TO THE ECONOMIZER ACCESSORY.

SEE UNIT RATING PLATE FOR TYPE AND SIZE OF OVER CURRENT PROTECTION

208-240/3/60 0140L00064 REV. C

FACTORY WIRING

- LINE VOLTAGE
- LOW VOLTAGE
- - - - - OPTIONAL HIGH VOLTAGE

FIELD WIRING

- - - - - HIGH VOLTAGE
- - - - - LOW VOLTAGE

WIRE CODE

- BK BLACK
- BL BLUE
- BR BROWN
- GR GREEN
- OR ORANGE
- PK PINK
- PU PURPLE
- RD RED
- WH WHITE
- YL YELLOW
- BL/PK BLUE WITH PINK STRIP
- YL/PK YELLOW WITH PINK STRIP

THERMOSTAT FIELD WIRING ++

NO ECONOMIZER

TB1 STAT

WITH ECONOMIZER OPTION

TB1 STAT

2 STAGE COOLING

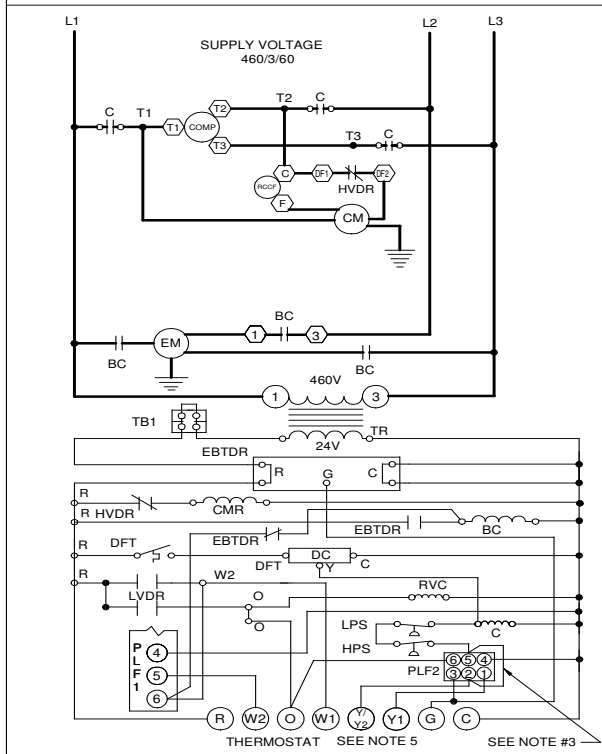
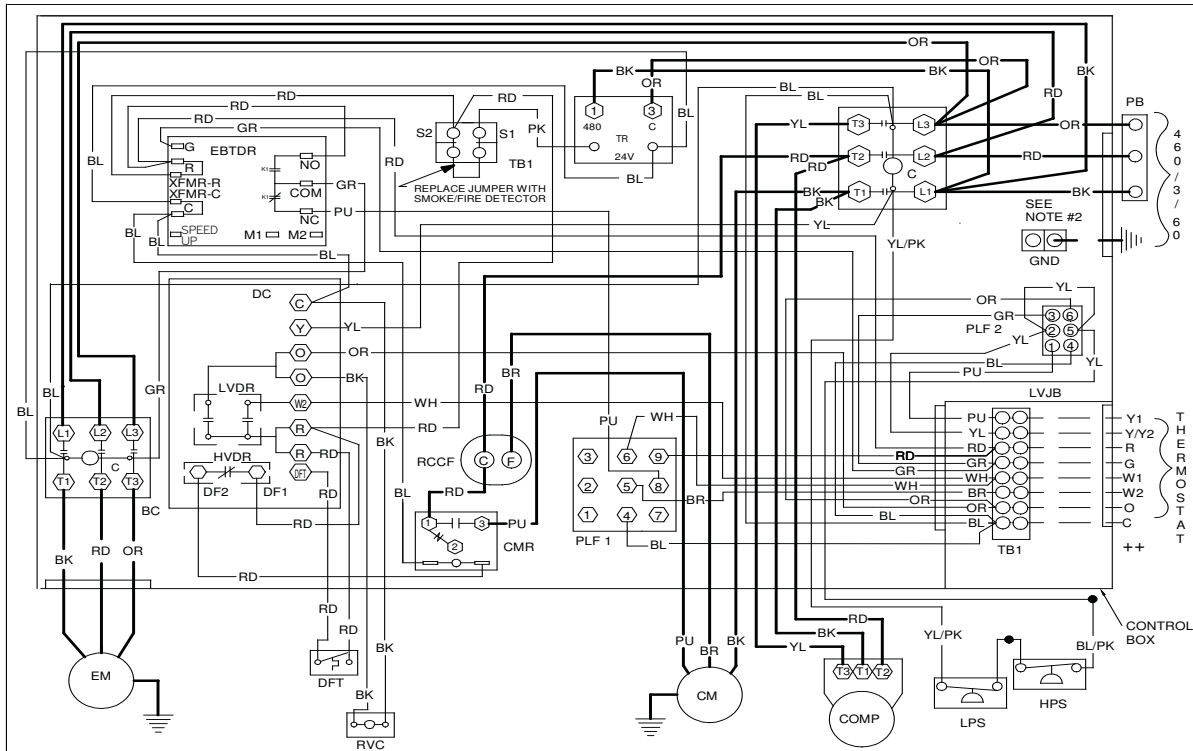
TB1 STAT

Wiring is subject to change. Always refer to the wiring diagram on the unit for the most up-to-date wiring.

WARNING

High Voltage: Disconnect all power before servicing or installing this unit. Multiple power sources may be present. Failure to do so may cause property damage, personal injury, or death.

WIRING DIAGRAM — CPH60***4B (460V BELT DRIVE)



COMPONENT LEGEND

BC BLOWER CONTACTOR
 C CONTACTOR
 CM CONDENSER MOTOR
 CMR CONDENSER MOTOR RELAY
 COMP COMPRESSOR
 DC DEFROST CONTROL
 DFT DEFROST THERMOSTAT
 ECON ECONOMIZER
 EBTDR ELECTRONIC BLOWER TIME DELAY
 EMR EVAPORATOR MOTOR RELAY
 R RELAY
 EM EVAPORATOR MOTOR
 FC FAN CAPACITOR
 GND EQUIPMENT GROUND
 HPS HIGH PRESSURE SWITCH
 HVDR HIGH VOLTAGE DEFROST RELAY
 LPS LOW PRESSURE SWITCH
 LVDR LOW VOLTAGE DEFROST RELAY
 LVJUB LOW VOLTAGE JUNCTION BOX
 PB POWER DISTRIBUTION BLOCK
 PLF FEMALE PLUG / CONNECTOR
 RVC REVERSING VAVLE COIL
 RCCF RUN CAPACITOR FOR CONDENSER FAN
 TB1 TERMINAL BLOCK (24V SIGNAL)
 TR TRANSFORMER

NOTES:

- REPLACEMENT WIRE MUST BE SAME SIZE AND TYPE INSULATION AS ORIGINAL (AT LEAST 105°C) USE COPPER CONDUCTOR ONLY.
- USE COPPER CONDUCTORS ONLY
 ++ USE N.E.C. CLASS 2 WIRE
- ECONOMIZER PLUG LOCATED IN THE RETURN AIR COMPARTMENT. REMOVE MALE PLUG AND ATTACH FEMALE PLUG TO THE ECONOMIZER ACCESSORY.

SEE UNIT RATING PLATE FOR TYPE AND SIZE OF OVER CURRENT PROTECTION

460/3/60 0140L00017 REV. C

FACTORY WIRING
 — LINE VOLTAGE
 — LOW VOLTAGE
 - - - - - OPTIONAL HIGH VOLTAGE

FIELD WIRING
 - - - - - HIGH VOLTAGE
 - - - - - LOW VOLTAGE

WIRE CODE

BK BLACK
 BL BLUE
 BR BROWN
 GR GREEN
 OR ORANGE
 PK PINK
 PU PURPLE
 RD RED
 WH WHITE
 YL YELLOW
 BL/PK BLUE WITH PINK STRIP
 YL/PK YELLOW WITH PINK STRIP

THERMOSTAT FIELD WIRING ++

NO ECONOMIZER

TB1
 (1) — WH — W
 (2) — GR — G
 (3) — RD — R
 (4) — YL — Y
 (5) — BL — C
 (6) — OR — O
 STAT

WITH ECONOMIZER OPTION

TB1
 (1) — WH — W
 (2) — GR — G
 (3) — RD — R
 (4) — YL — Y
 (5) — YL — Y
 (6) — BL — C
 (7) — OR — O
 STAT

2 STAGE COOLING

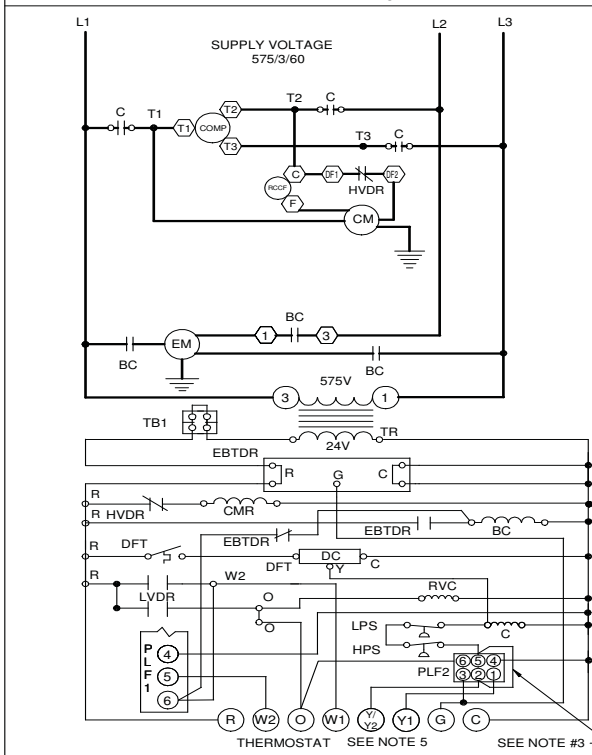
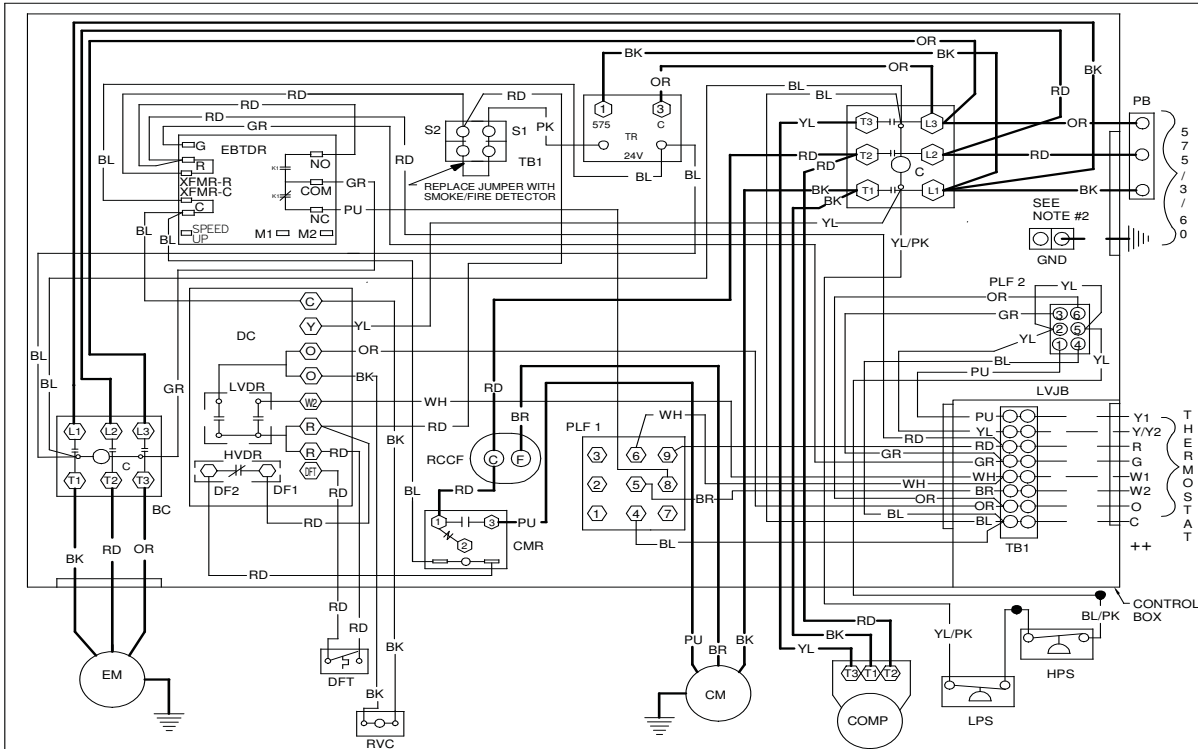
TB1
 (1) — WH — W
 (2) — GR — G
 (3) — RD — R
 (4) — YL — Y
 (5) — YL — Y
 (6) — PK — Y2
 (7) — BL — C
 (8) — OR — O
 STAT

Wiring is subject to change. Always refer to the wiring diagram on the unit for the most up-to-date wiring.

WARNING

High Voltage: Disconnect all power before servicing or installing this unit. Multiple power sources may be present. Failure to do so may cause property damage, personal injury, or death.

WIRING DIAGRAM — CPH60***7B*** (575V, BELT DRIVE)



COMPONENT LEGEND

BC	BLOWER CONTACTOR
C	CONTACTOR
CM	CONDENSER MOTOR
CMR	CONDENSER MOTOR RELAY
COMP	COMPRESSOR
DC	DEFROST CONTROL
DFT	DEFROST THERMOSTAT
ECON	ECONOMIZER
EBDT	ELECTRONIC BLOWER TIME DELAY
EMR	EVAPORATOR MOTOR RELAY
EM	EVAPORATOR MOTOR
FC	FAN CAPACITOR
GND	EQUIPMENT GROUND
HPS	HIGH PRESSURE SWITCH
HVDR	HIGH VOLTAGE DEFROST RELAY
LPS	LOW PRESSURE SWITCH
LVDR	LOW VOLTAGE DEFROST RELAY
LVJB	LOW VOLTAGE JUNCTION BOX
PB	FEMALE PLUG / CONNECTOR
PLF	PLUG / CONNECTOR
RVC	REVERSING VALVE COIL
RCCF	RUN CAPACITOR FOR CONDENSER FAN
TB1	TERMINAL BLOCK (24V SIGNAL) TRANSFORMER
TR	TRANSFORMER

- NOTES:**
1. REPLACEMENT WIRE MUST BE SAME SIZE AND TYPE INSULATION AS ORIGINAL (AT LEAST 105°C) USE COPPER CONDUCTOR ONLY.
 2. USE COPPER CONDUCTORS ONLY
 3. ECONOMIZER PLUG LOCATED IN THE RETURN AIR COMPARTMENT. REMOVE MALE PLUG AND ATTACH FEMALE PLUG TO THE ECONOMIZER ACCESSORY.

SEE UNIT RATING PLATE FOR TYPE AND SIZE OF OVER CURRENT PROTECTION
575/3/60 0140L00067 REV. C

FACTORY WIRING

— LINE VOLTAGE
— LOW VOLTAGE
- - - OPTIONAL HIGH VOLTAGE

FIELD WIRING

- - - HIGH VOLTAGE
- - - LOW VOLTAGE

WIRE CODE

BK BLACK
BL BLUE
BR BROWN
GR GREEN
OR ORANGE
PK PINK
PU PURPLE
RD RED
WH WHITE
YL YELLOW
BL/PK BLUE WITH PINK STRIP
YL/PK YELLOW WITH PINK STRIP

THERMOSTAT FIELD WIRING ++

NO ECONOMIZER

(M)	— WH —	W
(C)	— GR —	G
(R)	— RD —	R
(Y)	— YL —	Y
(C)	— BL —	C
(O)	— OR —	O

TB1 STAT

WITH ECONOMIZER OPTION

(M)	— WH —	W
(C)	— GR —	G
(R)	— RD —	R
(Y)	— YL —	Y
(C)	— BL —	C
(O)	— OR —	O

TB1 STAT

2 STAGE COOLING

(W)	— WH —	W
(C)	— GR —	G
(R)	— RD —	R
(Y)	— YL —	Y1
(Y)	— PK —	Y2
(C)	— BL —	C
(O)	— OR —	O

TB1 STAT

Wiring is subject to change. Always refer to the wiring diagram on the unit for the most up-to-date wiring.

<p>WARNING</p>	<p>High Voltage: Disconnect all power before servicing or installing this unit. Multiple power sources may be present. Failure to do so may cause property damage, personal injury, or death.</p>	
-----------------------	--	--

ACCESSORIES

Item #	Description	Fits Model Sizes	Dimensions (")	Ship Weight
14CURB3672	Roof Curb – 14" Tall	3-6 tons	16 x 6 x 76	119
25FD3672	25% Manual Fresh Air Damper	3-6 tons		11
25MFD3672	25% Motorized Fresh Air Damper	3-6 tons		12
CDK36	Concentric Duct Kit	3 tons	25 x 48 x 16	35
CDK4872	Concentric Duct Kit	4-6 tons	25 x 48 x 16	35
DNECONGS3672	Downflow Economizer for CPC/CPG	3-6 tons	32½ x 20½ x 38	75
DNECONHP3672	Downflow Economizer for CPH	3-6 tons	32½ x 20½ x 38	75
DNSQRRND36	Downflow Square-to-Round Adapter – 16" Round	3 tons		
DNSQRRND4872	Downflow Square-to-Round Adapter – 18" Round	4-6 tons		
HailGD01	Condenser Coil Hail Guard	3-6 tons	40 x 36 x 2	
HAKT36300	High-Altitude Kit	3-5 tons		
HZECONGS3672	Horizontal Economizer for CPC/CPG	3-6 tons		75
HZECONHP3672	Horizontal Economizer for CPH	3-6 tons		75
LPKT36150	LP Conversion Kit	All Models		

