



*The Name To Remember*

**DT**  
SERIES

## INDIRECT FIRED CUSTOM AIR HANDLING UNITS



1,500 - 218,000 CFM

- Indirect Fired Burners
- 3 - Pass Stainless Steel Heat Exchanger
- 2 or 3 Deck Multizone Capability
- 0 - 100% Outside Air Operation
- Indoor or Outdoor Operation
- Factory Wired & Tested
- Natural Gas, Liquid Propane or Oil Fired



## INDIRECT FIRED CUSTOM AIR HANDLING UNITS

AAON utilizes extensive product knowledge and state of the art manufacturing to continuously provide practical HVAC products to the dynamic market place.

**Functionality** – AAON equipment is designed and manufactured to meet your particular specifications. AAON custom products provide superior features and your choice of premier options. Along with your choice of controls, AAON custom equipment is tailored exactly to your job requirements.

**Flexibility** - AAON custom air handlers are optimally configured for individual applications. The custom market is differentiated by higher quality construction and virtually unlimited choices in unit components, material, configuration, cabinet size and aspect ratios.

**Innovation** - AAON sales, design and manufacturing engineers have extensive experience in the custom arena. As customers demand for greater flexibility and customization grows, AAON continues to develop innovative solutions to bring to the market. This passion to provide inventive products for our customers has led AAON to make substantial investments in research, development, engineering and manufacturing capability that have allowed AAON to revolutionize the HVAC market and deliver this standard of excellence to you.

### Superior Features

- All natural gas and liquid propane burners are modulating; #2 fuel oil burners are available as modulating or with staged capacity control depending on burner capacity.
- Gas and Electrical components operate down to -40°F (-40° C) for worry free operation even at your coldest operating point when operation is most important.
- Heat Exchanger is capable of a 120°F temperature rise.
- Hinged access doors for fan, filter, and coil sections provide quick and easy access to key areas of the equipment. No need to worry about removing panels to access the equipment.
- The unit is fully factory wired and tested so that the unit arrives to the jobsite ready for operation without costly setup or troubleshooting.

### Premier Options

- Burner is rated and suitable for natural gas, propane or #2 fuel oil operation.
- Casing Options include 2" or 4" Double Wall construction to be sure the conditioned air reaches the space and is not lost through the cabinet.
- Factory installed condensing sections are available, allowing you to create a completely customized packaged unit.
- Factory mounted direct injection, electric, gas-to-steam humidifiers and dispersion tubes save installation time at the jobsite.
- Factory or Field Mounted Controls can be provided to meet the existing control architecture or designed to meet your needs for new construction.
- Factory provided service platform or walk-in service vestibule to allow easy access to the equipment at the jobsite.
- Fan Isolation options include 1" deflection spring isolators, 2" deflection spring isolators, seismic or a concrete inertia base constructed of 6" iron channel and isolated with 2" deflection springs
- Filter options include Pleated, Permanent Washable, Cartridge, Bag and HEPA. These options are designed to meet even the most stringent indoor air quality requirements.
- Heat Exchanger material options include 304 and 321 to provide the flexibility in design needed for your application.
- Liner Options for the interior cabinet include a solid galvanized steel liner for improved indoor air quality and cleanability, a perforated galvanized steel liner for elimination of operational noise or a solid stainless steel liner for the ultimate in corrosion resistance.
- R-410A environment friendly refrigerant.
- Remote control panel with a summer-winter-off switch, burner on light, alarm light, fan on light, discharge air temperature setting and LED display and dirty filter indication light for unit monitoring without going to the mechanical room or rooftop.
- Cooling Coils.
- Heat Recovery, plate, wheel, heatpipe, run-around coils.

DT Model	CFM Range	Input MBH	Output MBH	Gas Conn.	Weight* (lbs.)
025	1,800 - 10,000	312	250	3/4"	1,200
030	2,350 - 12,000	375	300	3/4"	1,400
040	2,900 - 12,000	500	400	3/4"	1,400
050	3,600 - 17,000	652	500	3/4"	1,800
065	4,800 - 23,000	812	650	1"	2,300
075	5,400 - 24,000	937	750	1"	2,300
085	6,200 - 25,000	1,062	850	1 1/4"	3,600
100	7,500 - 36,000	1,250	1,000	1 1/4"	3,600
125	9,000 - 45,000	1,562	1,250	1 1/2"	5,200
150	11,000 - 54,000	1,875	1,500	1 1/2"	5,200
175	13,000 - 63,000	2,187	1,750	2"	6,500
200	15,000 - 72,000	2,500	2,000	2"	6,500
250	20,000 - 90,000	3,125	2,500	2"	11,500
300	22,000 - 109,000	3,750	3,000	2"	12,000
400	29,000 - 145,000	5,000	4,000	2 1/2"	13,000
600	43,000 - 218,000	7,500	6,000	2 1/2"	15,500

\* Weight shown is for base model. Actual weight will depend on options & materials selected.

## Applications

- High-rise Residential
- Clean Rooms
- Commercial office buildings
- Educational buildings
- Food processing facilities
- Grocery Stores
- Hospitals
- Manufacturing plants
- Pharmaceutical firms

## Performance

Because of the AAON custom air handler's performance flexibility, it has been successfully applied in a number of different applications. Whether your specific need is,

- Multizone
- VAV units
- Unique footprint or selectable air tunnel dimensions
- Special humidification / dehumidification
- Ultra quiet operation
- Energy recovery capabilities
- Make-up air capabilities
- Factory mounted options



## Fans

AAON can provide many types of fans to meet exact design requirements and are always individually selected to match external static, sound efficiency and space design criteria.

- Housed airfoil
- Housed backward inclined
- Housed forward curve
- Airfoil plenum
- Vane axial
- Prop exhaust

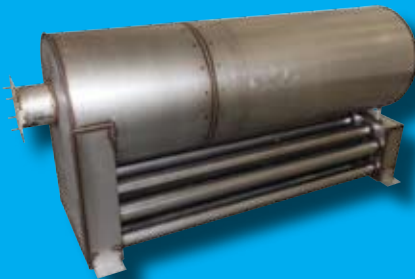
All fans can be provided with open drip proof (ODP) or totally enclosed fan cooled (TEFC) motors.

- Variable frequency drives

Fan isolation options:

- Rubber-in-shear isolators
- 1" or 2" deflection spring isolators
- Seismic
- Concrete inertia bases isolated with 2" deflection springs

## Indirect Fired Heater



- Indirect-fired heaters do not discharge combustion products into the heated space
- Highly efficient 3-pass heat exchanger design
- Uniform temperature distribution extends heat exchanger life
- Constructed to provide outdoor, as well as 100% recirculated air
- Standard Stainless Steel construction

## Coils

ARI Certified 1/2" and 5/8" coils.

- Low pressure drop and high performance
- Aluminum or copper fins
- Galvanized or stainless steel casing
- Intertwined, face-split or condensing unit matched circuiting
- Special coatings for highly corrosive environments



## Controls

Control flexibility provides solutions for stand alone operation or building automation system integration.

- Factory wired to terminal strip for controls by others
- Pre-engineered factory mounted commissioned controls
- Customer specified factory mounted controls
- Interconnected or networked
- Integrated into open protocol environments





# AAON Environmentally Friendly HVAC Product Family

**Customer Commitment** – AAON encourages environmentally responsible design by incorporating many energy saving features into our superior heating and cooling products. In addition to energy efficiency, AAON also offers environmentally friendly R-410A refrigerant capability in all our cooling and heat pump equipment. As countries throughout the world phase out CFC and HCFC refrigerants, R-410A is becoming the global standard and AAON is leading the way!



## Rooftop Units



2 - 5 Tons



2 - 30 Tons



26 - 70 Tons



45 - 230 Tons

## Condensing Units



2 - 5 Tons



7.5 - 40 Tons



45 - 230 Tons

## Air-Cooled or Evaporative-Cooled Chiller



35 - 365 Tons

## Boiler



500 - 6,000 MBH

## Custom Indoor or Outdoor Air Handling Units



1,000 - 100,000+ CFM



1,500 - 218,000 CFM



1,000 - 120,000+ CFM

## Outdoor Air Handling Units



800 - 2,000 CFM



800 - 12,000 CFM



10,400 - 28,000 CFM



18,000 - 68,000 CFM

## Indoor Air Handling Units



1,000 - 16,000 CFM



17,000 - 52,000 CFM



800 - 10,000 CFM

It is the intent of AAON to provide accurate up-to-date specification data. However, in the interest of ongoing product improvement, AAON, Inc. reserves the right to change specifications and/or design of any product without notice, obligation, or liability.

AAON® products are covered by one or more of the following U.S. patents: 5,738,167; 5,826,641; 5,839,505; 6,715,312; 6,792,767; 6,802,543; 6,929,452.

AAON and AAONAIRE are registered trademarks of AAON, Inc.

D-PAC and AAONEcat32 are trademarks of AAON, Inc.

Heatflow and AAON Suite are trademarks of AAON Coil Products, Inc.

